



HUMMINBIRD '11

Simply. Clearly. Better.

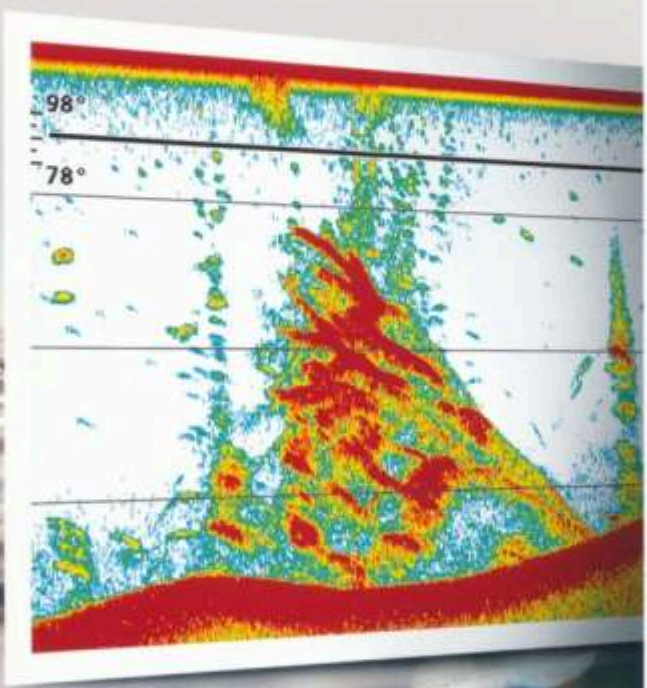


 **BLA**
boatinglifestyleadventure

humminbird.com.au
humminbird.co.nz
humminbird.asia

Simply. Clearly. Better.

Humminbird® SwitchFire™ pg. 9



Humminbird® Side Imaging® pg.4-5



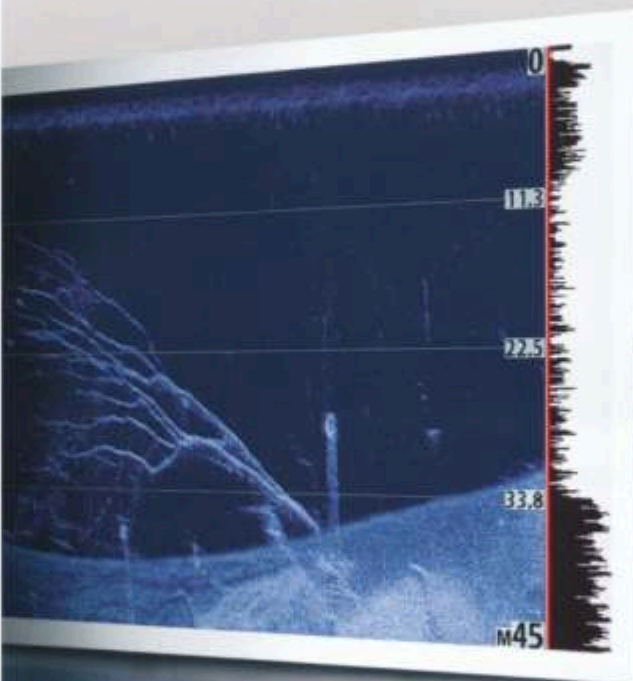


HUMMINBIRD

Simply. Clearly. Better.

In the fishfinding arms race, there's one clear superpower. Only Humminbird® puts the world's three most powerful sonar technologies at your trigger finger – so you can take aim and land the big one. Patented Side Imaging® gives you amazing, picture-like images of the world below. With another take on the water column, Down Imaging™ shows you what's going down directly below your boat. SwitchFire™ sonar kicks our traditional sonar up a notch, giving you the choice of two display modes for even more on-water versatility. Leave nothing to chance. Storm the seas with a fully loaded Humminbird.®

Humminbird® Down Imaging™ pg 6-7



Technology

- 4-5 Humminbird® Side Imaging® Sonar
- 6-7 Humminbird® Down Imaging™ Sonar
- 8 Humminbird® Sonar
- 9 Humminbird® SwitchFire™
- 10-11 System Network
- 12-13 GPS Cartography

Products

- 14-15 1100 Series™
- 16-17 900 Series™
- 18-19 800 Series™
- 20-21 700 Series™ Colour
- 22-23 700 Series™
- 24-27 500 Series™
- 28-29 300 Series™
- 30-31 PiranhaMAX™
- 32-33 Fishin' Buddy®
- 34-38 Specifications
- 39 Transducers
- 40 New for 2011
- 41 Latest Releases

Community

- 42 Humminbird® Pro Team
- 43 Humminbird® Proudly Supports

Visit www.humminbird.com.au



What's this?

This is a QR Code (Quick Response Code). Which allows you to view Humminbird® video clips from your web enabled mobile phone.

Step 1:

Download your free phone app from qrcode.kaywa.com

Step 2:

Scan the code from your mobile phone using the camera.

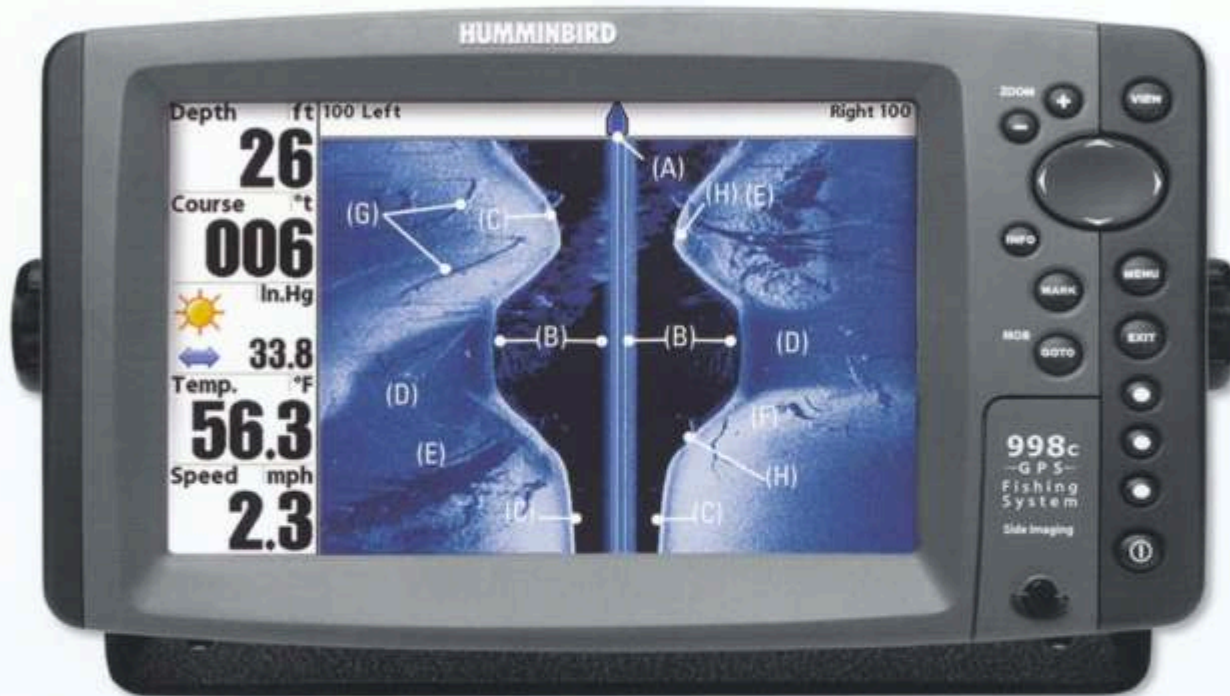
Like nothing you've ever seen



Side Imaging

Humminbird® High Definition Side Imaging® Sonar, first to release in 2005

Side Imaging® Sonar, with its amazingly clear, picture-like images of fish, the bottom and structure, is available exclusively in select 1100, 900, 800 and 700 Series fishfinders. It's the ultimate structure-finding tool, and with its massive coverage (146 metres) from side to side! you can scan in mere minutes what used to take hours.



(A) BOAT LOCATION

The position of your boat in relation to the on-screen image. The on-screen image is a history of what you have passed over.

(B) WATER COLUMN

The dark blue area shows structure and activity between the surface and bottom directly under the path of your boat.

(C) BOTTOM PROFILE

Reveals depth and attitude of the bottom directly beneath the path of your boat.

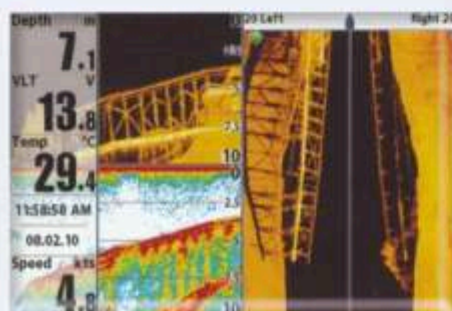
(D) FLAT TERRAIN

Neutral shades of blue represent flatter terrain.

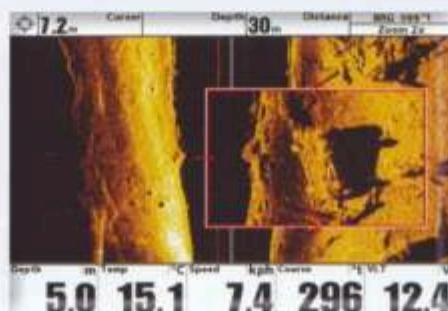
(E) DESCENDING TERRAIN

Dark shades of blue represent descending terrain.

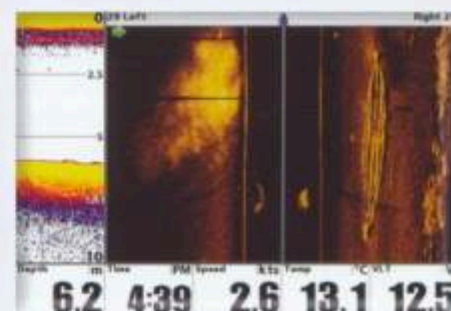
Exclusive Humminbird's® High Definition Side Imaging® Clarity & Detail



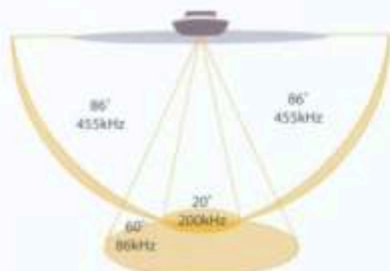
Ship Slip



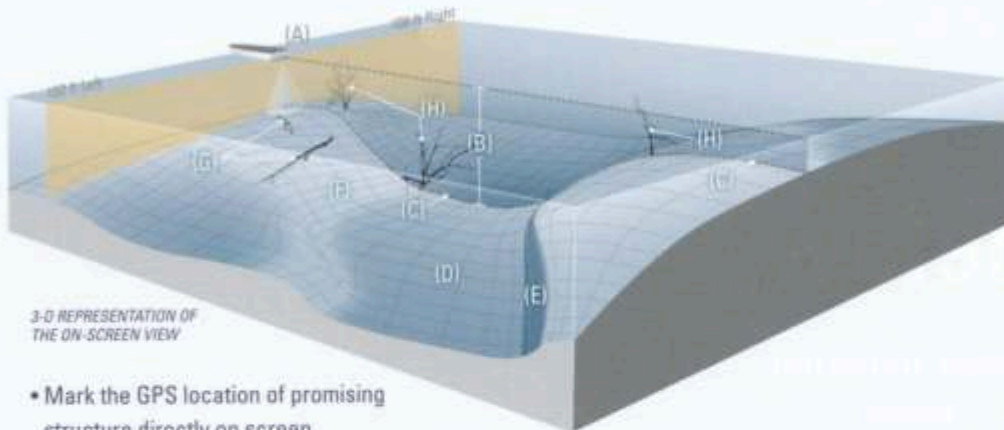
Car on roof



Old wreck



▲ 180 Degree Coverage
▼ Bottom Coverage = 480 ft



3-D REPRESENTATION OF THE ON-SCREEN VIEW

- Mark the GPS location of promising structure directly on screen
- Magnify the detail with multiple zoom levels
- High frequency sonar (not a camera) cuts through murk with crystal clarity
- Up to 146 metres of coverage from side to side, scans huge areas fast
- Units with Side Imaging® also include traditional down looking 2D™ sonar and Down Imaging™

(F) RISING TERRAIN

Lighter shades of blue typically represent terrain rising from the bottom. Sometimes, very hard bottoms appear as a whiter shade.

(G) FALLEN LOG WITH SHADOW

The shortened horizontal shadows indicate structure very close to the bottom of the lake. The angle of the shadow gives away the orientation of the log.

(H) STANDING TIMBER WITH SHADOW

Objects standing off the bottom typically appear as a bright spot, or a clearly defined bright shape with an adjacent, dark sonar "shadow." This shadow is not caused by light rather it's the lack of sonar return because the object has already reflected the sonar energy. Generally, long shadows indicate the object is tall, and small shadows indicate something short. It's important to note the shadow will often tell you all about the object than the primary sonar reflection.

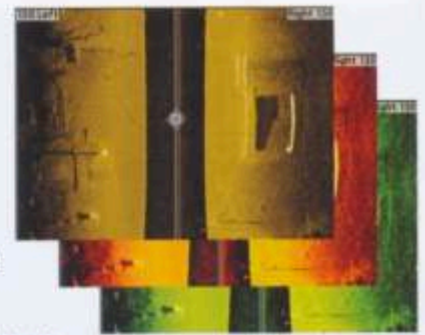
➤ **Customize Your Display**

Take control of Humminbird® Side Imaging® with more options than ever.

Adjust Sensitivity: Fine-tune your sonar for the best returns in any water condition.

Adjust Sharpness: Tweak display to enhance edges and detail in any light.

Adjust Colour: Choose from eight colour palettes to give even more flexibility on the water.

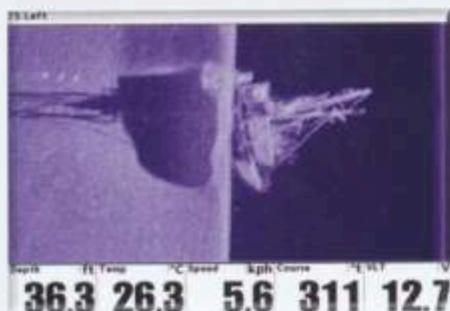


➤ **Contour View**

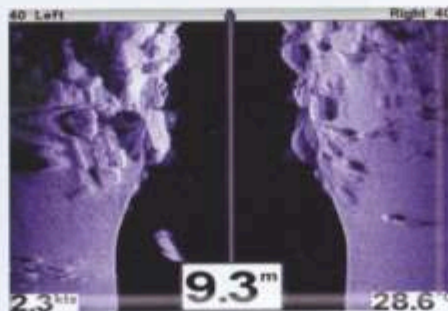
Enables the angler to remove the dark water column in the middle of the screen for a complete bottom view.



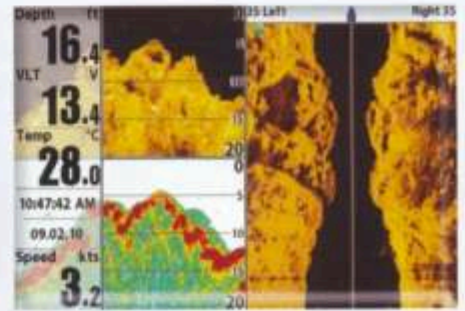
Watch how Side Imaging® works



Trawler wreck Trinity Inlet Cairns



Sand to reef



Rock Bar

Look out below



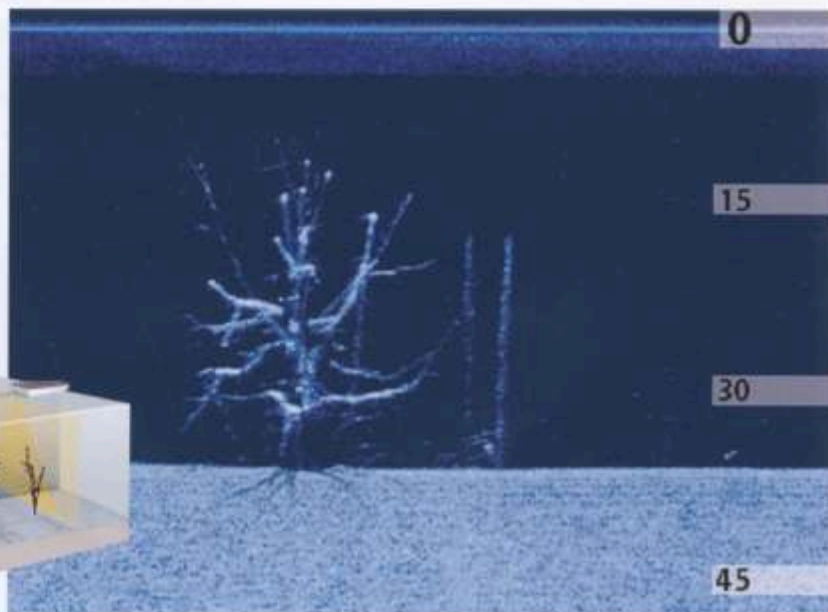
Down Imaging

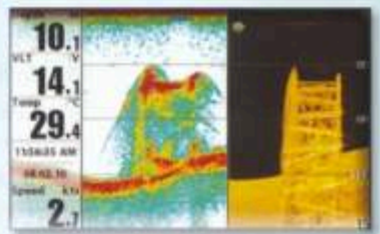
Humminbird® High Definition Down Imaging™ Sonar Created in 2010

We've pointed our Side Imaging® technology in a new direction: straight down. Now you can see what is happening directly below your boat. Timber, weed, bridge pylons, reefs and any other structure will pop with stunning detail as you patrol the water.

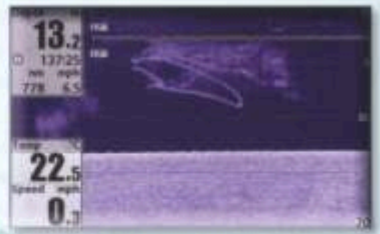
➤ High Definition Down Imaging™

The picture-like images of Down Imaging™ are created with high-frequency sound waves emitted in razor thin slices. The sonar returns from these waves create an instant "snapshot" directly below the boat. Our exclusive software analyzes the returns to verify the position of the echoes to ensure Down Imaging™ only shows you structure and activity directly beneath you, and not off to one side or another.

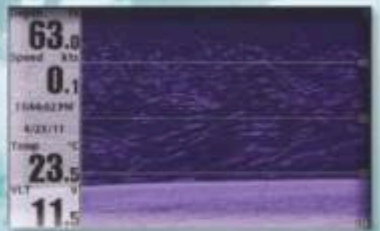




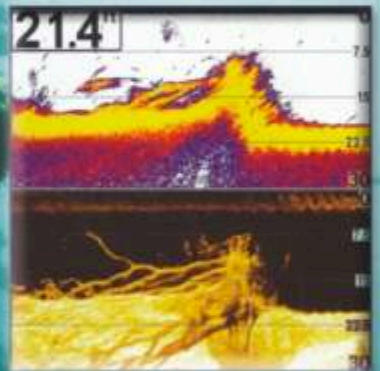
Ship Slip



Prawns and cast net

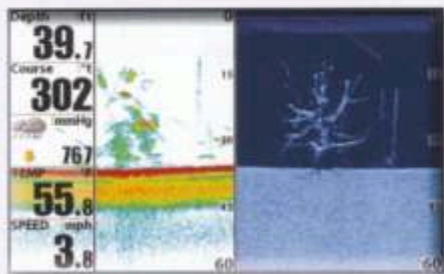


Bass School



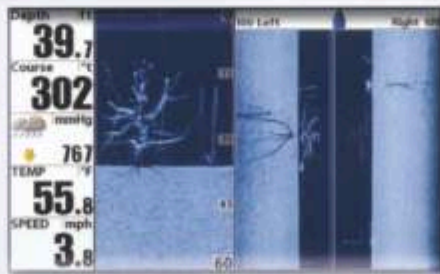
Snag in DualBeam Plus™ & Down Imaging™

Watch how
Down Imaging™ works



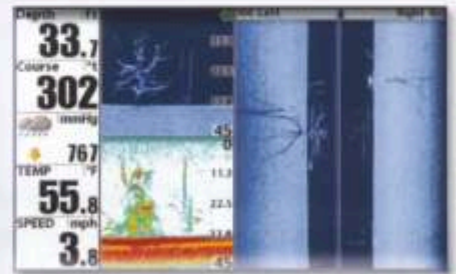
Down Imaging™ / 2D Sonar

This view provides complete understanding of what, exactly, is going on below your boat. Quickly identify structure with Down Imaging™, while using 2D to locate and target fish. Together, they take the guesswork out of sonar fishfinding.



Down Imaging™ / Side Imaging® Sonar

Get a complete 180° view. Down Imaging™ provides picture-like views directly below the boat, while Side Imaging® shows structure out to 75 metres on either side of your boat. It's two detailed images unlike anything you've ever seen.



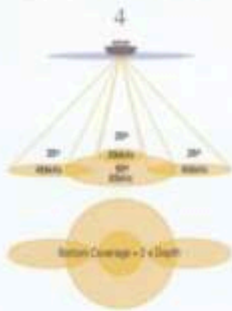
Down Imaging™ / Side Imaging® / 2D Sonar

Don't miss a thing with these three Humminbird technologies working together. Use traditional 2D and Down Imaging™ together for a straight down view, while Side Imaging® reaches out to both sides.

Humminbird Sonar



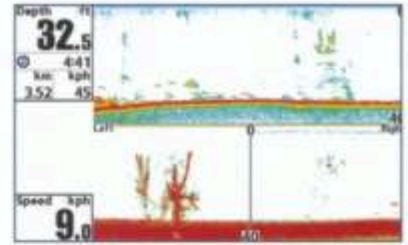
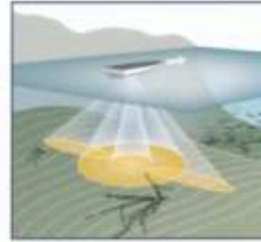
QuadraBeam PLUS



❖ QuadraBeam PLUS™ Sonar

For full 90° coverage, turn to Humminbird's® QuadraBeam PLUS™ Sonar.

- DualBeam PLUS™ 60° and 20° beams scan below the boat
- Two fan-shaped 35° beams look to the sides
- Shows whether fish are to the right, left or below the boat for cast placement
- Unique display shows you two separate views below and to the sides
- Scans an area equal to TWICE your depth, revealing more fish and structure
- Compatible with 700, 800, 900 and 1100 series units



Submerged tree to left of boat



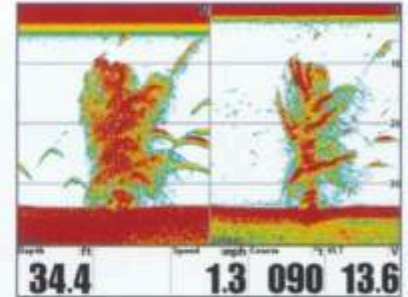
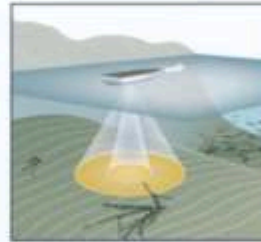
DualBeam PLUS



❖ DualBeam PLUS™ Sonar

Get the best of both worlds with selectable narrow and wide beams you can view individually, or combine on one display.

- Precise 20° beam is optimized for excellent bottom detail and reveals fish hidden in bottom clutter
- Wider 60° beam provides greater coverage for fish and bait fish
- View beams separately, side by side, or blended together for the most complete picture
- Find fish and structure in an area equal to your depth



Submerged tree and fish



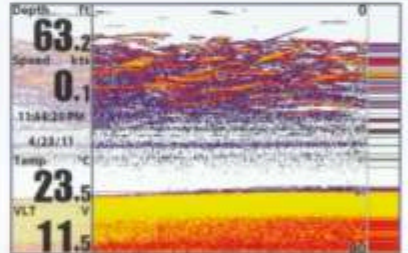
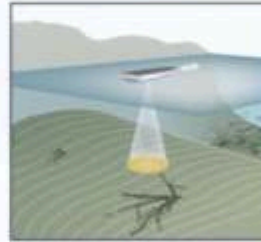
Single Beam



❖ Single Beam Sonar

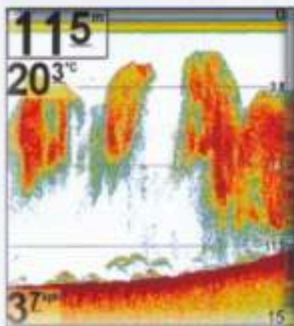
Optimized for excellent coverage of the bottom.

- Narrow 20° beam for precision
- Allows you to focus on the bottom and fish in heavy structure
- Provides the best image of the bottom
- Coverage of an area equal to 1/3 your depth



School of suspended fish

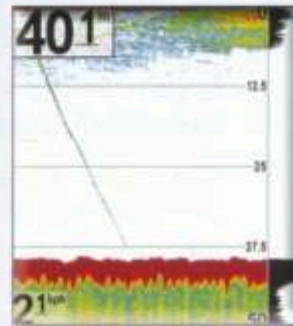
❖ Humminbird's® Sonar Detail



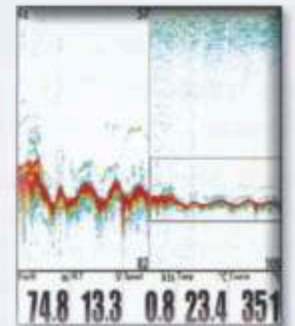
Snapper under bait



Fish holding on bottom under bait



Jig head to bottom



Fish holding near bottom

Ready. Aim. SwitchFire.



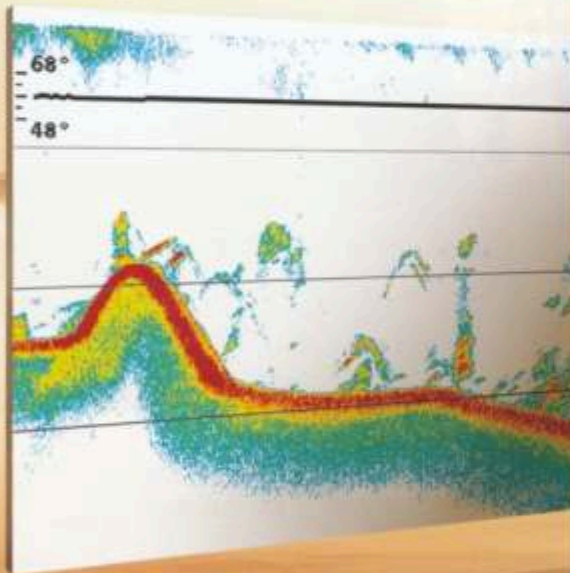
SwitchFire

Choose your view with SwitchFire™ Sonar.

When you hit the water, you don't limit yourself to one bait. So why limit your sonar? Exclusive Humminbird® SwitchFire™ Sonar gives you the power to choose how returns are displayed. With two unique modes you have complete control to adjust with the fishing conditions, making our downlooking sonar an even more valuable fishfinding tool. With SwitchFire™ Sonar you'll never fish the same way again. Just another way Humminbird® is Simply, Clearly, Better.

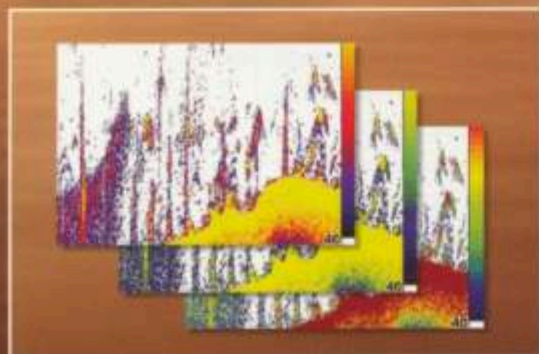
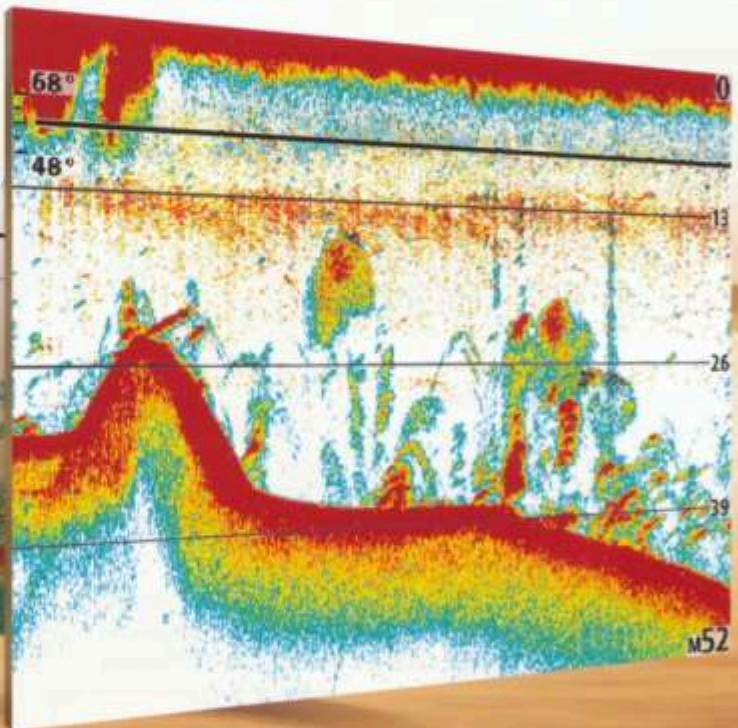
Clear mode

Time Variable Gain (TVG) software sifts through sonar returns to display only fish and structure. Great for fishing in shallow and rough water, or reducing undesired clutter in the water column.



Max mode

Watch as the sonar returns explode from the screen in amazing detail. You'll see the tiniest subsurface object, even thermoclines and water currents, for complete underwater coverage.



Three new colour palettes

Have more flexibility on the water to deal with overcast or full-sun conditions.

Watch how SwitchFire™ works



New High-Speed Ethernet



It's the ultimate in customisable interconnectivity. Humminbird's® 1100, 900, 800, 700HD Series fishfinders and Ethernet-equipped legacy models, are completely upgradeable and expandable, giving you advanced capabilities from bow to stern. You get the capability and convenience of sharing GPS positions, waypoints, routes, barometric pressure information and even downrigger control.

Choose the network capabilities you want from our many options, and easily connect them with Humminbird's® exclusive no-hassle Plug and Play technology. With no expensive wiring built into your boat, or complicated connections it is just another example why Humminbird® is Simply, Clearly, Better.



ETHERNET CABLES

BLA Code	Description
103900	Humminbird Ethernet Cable 0.6M
103902	Humminbird Ethernet Cable 3M
103903	Humminbird Ethernet Cable 6M
103904	Humminbird Ethernet Cable 9M
103906	Humminbird Adapter Cable T/S 700HD

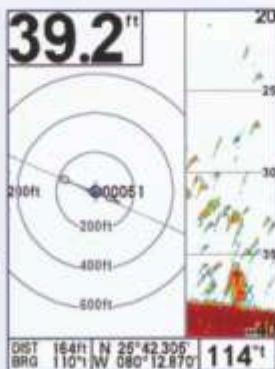
Standard GPS

BLA Code 101082 - 16 Channel GPS Receiver
BLA Code 101084 - 50 Channel GPS Receiver



Humminbird® offers unparalleled GPS technology out of the box. All Humminbird® Combo models have 50 Channel GPS receiver standard.

- The Humminbird® 50 Channel GPS receiver, standard on the 300, 500, 700 800, 900, and 1100 Series enables lightning fast position fixes accurate within 2.5 metres. Use split screen function to view both your position and sonar simultaneously
- You can also use Humminbird's® adapter and the NMEA output on your own handheld GPS unit, or use Humminbird's® InterLink™ to allow two fishfinders to access one GPS receiver



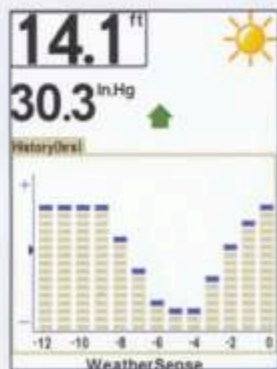
WeatherSense®

BLA Code 103130

Barometric Pressure Monitor

Adapt your tactics to changing weather that impacts fish behavior with WeatherSense®.

- Provides increasing or decreasing pressure trends on a full-screen view or as a readout on your sonar display
- Internal battery and smart monitoring system log the last 12 hours of data
- You always start fishing with up-to-the-minute barometric pressure trends



➤ CannonLink™ Downrigger Controller BLA Code 103150

Downriggers are the key to catching fish you otherwise couldn't even touch, and the CannonLink™ Downrigger Control makes operating up to six Cannon Digi-Troll 10 TS or Digi-Troll 5 TS downriggers incredibly easy. You're never short-handed... operate your downriggers from your Humminbird® 1100, 900, 800 or 700 Series™ fishfinder, while your mate rigs the lines and brings in the fish.

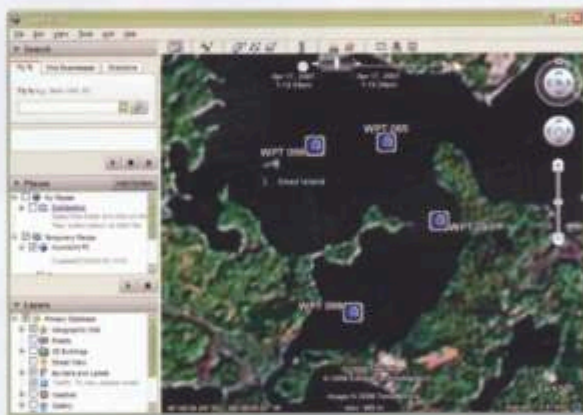
- Deploy and retrieve them easily
- Hold bait at a specific distance off the bottom
- Cycle downriggers between two depths
- Adjust Positive Ion Control



➤ HumminbirdPC™

All current Humminbird® fishfinders* are completely software upgradeable, by using your home PC, internet connection and HumminbirdPC™ application.

- Access software updates to enhance performance
- Download entirely new features and capabilities
- Easily create, sort and store waypoints, routes and other navigational data in your PC with intuitive waypoint management features
- Convert waypoints, routes and tracks from other GPS manufacturers to work with your Humminbird®
- Downloads free of charge on the Humminbird® website



Load selected waypoints and routes into Google Earth and automatically view their location.

*Except PiranhaMAX™ and Fishin Buddy®

➤ Sonar Recording and Snap Shot

Remember what you see using screen Snap Shot or new Sonar Recording to SD memory cards. Snap Shots are like digital pictures of the screen and can be saved anytime you mark a hotspot or point of interest. Sonar Recordings save digital sonar information so you can play it back onscreen, and even fine tune the unit's settings to see what else the returns reveal. Available on all current models with a memory card slot.



Waypoint screen shot view. Simply put your cursor on any snapshot waypoint to reveal the original sonar snap shot.



Never fish without a guide again



Built-In Map

You want to spend your time on the water fishing, not navigating. At Humminbird® we understand. Many of our Humminbird® products incorporate GPS and are compatible with Navionics®, the leader in electronic charts. So take an extra cast and let your Humminbird® guide you home safely. Just another reason why Humminbird® is Simply, Clearly, Better.

PRELOADED CHARTS

➤ Humminbird Unimap™

More Humminbird Fishing Systems and fishfinders than ever include a built-in UniMap™ covering the Australian and New Zealand Coastline at 30 metres per pixel resolution. UniMap™ gives you an accurate map almost anywhere you travel.



UniMap™

OPTIONAL CHARTS

➤ Navionics® Gold

Navionics® Gold is a huge library of electronic cartography on easy-to-use plug and play memory cards. You get all the detail right on your display, including bottom contours, structure, reefs, drop-offs, vegetation and other information that will help you find and catch more fish. For coastal anglers there's also extensive navigational data, such as spot soundings, buoys, beacons, lights and more. Other features include tide and current data and user-selectable depth contours.



Navionics® Gold

➤ Navionics® Platinum+

Navionics® Platinum+, available for select 800, 900 and 110 Series™ Fishing Systems, give you an unprecedented view of the world from the water.

3D View

View a 3D chart of depths and elevations you can rotate in any direction to get the best angle.

Satellite Photo Overlay

Overlay your Navionics® chart with a satellite photo of the area.

Panoramic Photos

More than 15,000 panoramic aerial photos of harbours and marinas give you a clear picture of what you're looking for.

Enhanced Port Services and Points of Interest

The Enhanced Port Services and Points of Interest include data on major coastal roads, area services and phone numbers.

Coast Pilot Books

Coast Pilot information opens to the chapter and paragraph you need, describing the area near the selected marina.

All Navionics® Gold Features are Built-In

COMPATIBLE MODELS

Navionics® Platinum+

1198cx SI Combo
1158cx Combo
998cx SI Combo
958cx Combo
898cx SI Combo
858cx Combo

Navionics® Gold

1100 Series	900 Series	800 Series	700 Series	500 Series	300 Series
1198cx SI Combo	998cx SI Combo	898cx SI Combo	798cxi HD SI Combo	597cxi HD DI	385cxi Combo
1158cx Combo	958cx Combo	858cx Combo	788cxi HD DI Combo	597 cxi HD	365cxi Combo
			788cxi HD Combo	587 cxi HD	

NAVIONICS CHART

BLA Code	New Zealand	BLA Code	Australia
111628	Navionics® Gold XL9 New Zealand	111624	Navionics® Gold XL9 Australia
111594	Navionics® XL Platinum New Zealand	111618	Navionics® XL3 Platinum Australia North West
BLA Code	International	111619	Navionics® XL3 Platinum Australia South
111625	Navionics® Pacific Islands & Japan	111620	Navionics® XL3 Platinum Australia East
111627	Navionics® India & South China Sea		



Panoramic photos.



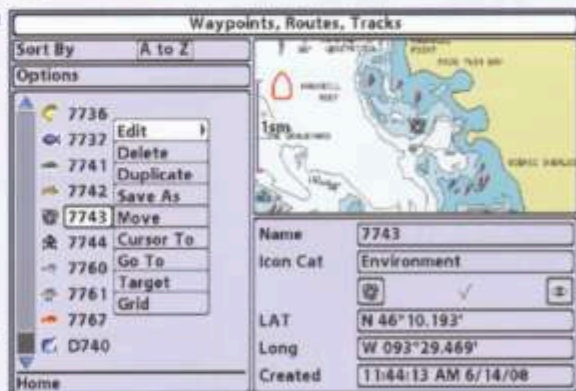
View satellite photo overlay combined with traditional charts.

DATA MANAGEMENT

Waypoint Management

Saving waypoints is one of the great features of Humminbird® fishfinders. Now, we've armed you with software that makes managing all of your saved waypoints even easier. With exclusive Humminbird® Waypoint Management you can organise your saved locations any number of ways, so you never

lose an important waypoint again. Waypoint Management gives you the ability to sort waypoints alphabetically, by nearest location, or by most recently saved. Beyond that, there are naming conventions that allow for further organization by species, location, date or structure. You can also choose from numerous new icons to identify waypoints at a glance. Now available are species specific icons and structure oriented icons for rock bars and weedbeds. With Waypoint Management you'll be in complete control of all your saved data, and back to that hot spot time and again.



Waypoint Management

RODERICK WALMSLEY RU4 REEL Charters

"I rely on my Humminbird 1198 to give me the edge I need. From the inshore reefs off the Tweed River right out to the deep waters of the continental shelf, my 1198 produces the goods every time."



10.4"
600V x 800H

New Super Bright Led Backlit LCD. The new Humminbird™ 1100 Series™ features a massive 10.4" diagonal full-colour display. With pristine 600V x 800H pixel clarity for easy viewing in harsh sunlight.

1100 Series – large HD screen, advanced performance

Actually, to call it a mere display is an understatement. It's more like your big screen view of what's below, and up to 75 metres either side of your boat: Humminbird's® exclusive High-Definition Side Imaging® and Down Imaging™, with its picture like images of the bottom, reveals a complete 180° view of the bottom*. Because it's a BIG world, the BIG display is the perfect navigational tool. With its 50 channel GPS and chartplotting capability, the built-in UniMap™ and optional Navionics® Gold charts, the 1100 Series™ will turn you into a navigational pro. Upgrade to Navionics® Platinum and see the world in entirely new ways, with satellite overlays and even aerial photography. Plus, add any of our performance enhancing fishing modules for even more capability. Seventy-five percent of the earth's surface is water... the Humminbird® 1100 Series™ has you covered.

Simply. Clearly. Better.

*1198cx SI Combo only.



➤ 1198cx SI Combo BLA Code 104332



The new 1198cx SI Combo features High Definition Side Imaging®, Down Imaging™ and DualBeam PLUS™ colour sonar & GPS Chartplotting, all on a massive 10.4" high resolution display. Includes unit cover.



Display	600V x 800H, 10.4" diagonal, 65,000 colour TFT
Sonar Standard	HD Side Imaging®, Down Imaging™ and DualBeamPlus™
Sonar Coverage(s)	HD Side Imaging® and Down Imaging™ 455kHz/(2) 86° @-10db, 800kHz/(2) 55° @-10db, DualBeam PLUS, 200kHz/20° @-10db, 83kHz/60°-10db, 180° total coverage
Operating Frequency(s)	800, 455, 200 & 83 kHz
Power Output:	500 watts RMS (4000 watts PTP) with Standard Transducer or 1000 watts RMS (8000 watts PTP) with Opt 50/200kHz 1 kW Transducer
Depth Capability	DualBeamPlus™: 457m with standard transducer or 915m with optional 1kw transducer. Side imaging: 45m out to 75m each side of the boat.
Target Separation:	64mm
Temperature	Included in transducer
Speed	GPS Speed Included, through water optional
Power Input	10-20 VDC
Waterproof	Yes
Unit Mounting	Gimbal or optional In-Dash
Unit Size Installed (Gimbal)	333mmW x 237mmH x 74mmD
Unit Size Installed (In-dash)	333mm x 224mm x 74mm Required minimum 76mm behind dash clear
Transducer Mounting	Transom standard; optional trolling motor or thru hulls available
GPS Receiver	External 50 Channel
Waypoints, Routes, Tracks/Points	3000, 50, 50/20,000
Cartography	Uni-Map™ Built-in, Optional Navionics® Platinum or Gold cartography
Communication	NMEA 0183 Input/Output; Fishing system modules
Optional System Modules	InterLink™, CannonLink™, WeatherSense® Barometric Pressure and PC Connection Kit
Video Out	PAL, PAL M, NTSC (optional cable required)
Ethernet Networking	Yes



➤ **1158cx Combo** BLA Code 104322



The new 1158cx Combo features DualBeam PLUS™ sonar, GPS Chartplotting with built-in UniMap™, and advanced Fishing System capabilities.



Display	800V x 800H, 10.4" diagonal, 65,000 colour TFT
Sonar Standard	DualBeam PLUS™
Sonar Coverage(s)	200kHz: 20° @ - 10db, 83kHz: 60° @ - 10db
Operating Frequency(s)	200 & 83 kHz
Power Output:	500 watts RMS (4000 watts PTP) with standard transducer or 1000 watts RMS (8000 watts PTP) with Opt 50/200kHz 1kW Transducer
Depth Capability	DualBeamPlus™: 457m with standard transducer or 915m with optional 1kw transducer
Target Separation	64mm
Temperature	Included in transducer
Speed	GPS Speed Included, through water optional
Power Input	10-20 VDC
Waterproof	Yes
Unit Mounting	Gimbal or optional in-dash (same dimension as 1197cx S1)
Transducer Mounting	Transom standard; optional trolling motor or thru hulls available
GPS Receiver	External 50 Channel
Waypoints, Routes, Tracks/Points	3000, 50, 50/20,000
Cartography	Uni-Map™ Built-in, Optional Navionics® Platinum, or Gold cartography
Communication	NMEA 0183 Input/Output; Fishing System Modules
Optional System Modules	InterLink™, CannonLink™, WeatherSense® Barometric Pressure and PC Connection Kit
Video Out	PAL, PAL M, NTSC (optional cable required)
Ethernet Networking	Yes



On Water Flexibility

Dual, integrated SD Card Slots* give you maximum productivity from your Humminbird®. One slot gives you access to advanced cartography options, while leaving another open to save screen snapshots, sonar recording and waypoints.

*SD cards not supplied.

Built around widescreen, 8" full colour displays, Humminbird's® 900 Series™ fishfinders offer all anglers a distinctive on-the-water performance advantage. You not only get exclusive, high-definition Side Imaging® and Down Imaging™ Sonar with its picture like images of structure up to 75 metres either side of your boat*, you can also penetrate to depths of up to 450 metres with its powerful, traditional 2D sonar.

900 Series - HD wide screen, advanced features

The 16:9 aspect ratio display makes for easy-to-read split screen viewing of sonar displays or the incredibly detailed optional Navionics® Gold or Navionics® Platinum cartography. CannonLink™, WeatherSense® and other add-on modules only add to its already unbeatable performance. Simply put, the 900 Series™ does things to help you find fish that no other fishfinder can.

Simply. Clearly. Better.

*998cx SI Combo only.



998cx SI Combo BLA Code 104249



LEE RAYNER
TV Presenter

"After years of fishing inshore and offshore waters and using many different brands of sounders and GPS I can say with complete confidence that I have never been happier than with my Humminbird® gear."



The 998cx SI Combo features a brilliant colour, wide screen 480V x 800H 8" display. Side Imaging®, Down Imaging™ and DualBeam PLUS™ sonar with up to 8000 watts* PTP power output, GPS chartplotting with built in UniMap™, and advanced Fishing System capabilities. Includes unit cover.



Display Size	8" diagonal
Display Pixel Matrix	480V x 800H
Display Type	Colour TFT
Display Colours	Greyscale 65,000 colours
Sonar - Standard	HD Side Imaging®, Down Imaging™ and DualBeam PLUS™
Sonar Coverage	20°, 60° & 180° @ -10db
Sonar Frequency	200/83/455/800 kHz
Sonar Optional	QuadraBeam PLUS™
Target Separation	65mm
Power Output (max.)	1000 watts (RMS)* 8000 watts* (peak to peak)
Depth Capability	45m SI, 457m & 900m*
Temperature	Included
Speed	GPS speed included
Backlight	Yes
Waterproof	Yes
Unit Size Installed (Gimbal)	286W x 171H x 108D mm
Unit Size Installed (In-dash)	286W x 152H x 63.5D mm
Mount	Gimbal or optional in-dash
Transducer - BLA Code	103250
Transducer Mounting - Standard	Transom
Power Input	10-20VDC
GPS Receiver	50 Channel
Ethernet Networking	Yes

*Optional 1kw 50/200 kHz required for maximum power output.



958cx Combo BLA Code 104241



The 958cx Combo features a brilliant colour, wide screen 480V x 800H 8" display. DualBeam PLUS™ sonar with up to 8000 watts* PTP power output, GPS chartplotting with built in UniMap™ and advanced Fishing System capabilities. Includes unit cover.



Display Size	8" diagonal
Display Pixel Matrix	480V x 800H
Display Type	Colour TFT
Display Colours/Greyscale	65,000 colours
Sonar - Standard	DualBeam PLUS™
Sonar Coverage	20° & 60° @ -10db
Sonar Frequency	200/83 kHz
Sonar Optional	QuadraBeam PLUS™
Target Separation	65mm
Power Output (max.)	1000 watts (RMS)* 8000 watts* (peak to peak)
Depth Capability	457 m & 900 m*
Temperature	Included
Speed	GPS speed included
Backlight	Yes
Waterproof	Yes
Unit Size Installed (Gimbal)	286W x 171H x 108D mm
Unit Size Installed (In-dash)	286W x 152H x 63.5D mm
Mount	Gimbal or optional in-dash
Transducer - BLA Code	103303
Transducer Mounting - Standard	Inside hull or transom
Power Input	10-20VDC
GPS Receiver	50 Channel
Ethernet Networking	Yes



8"
480Vx800H

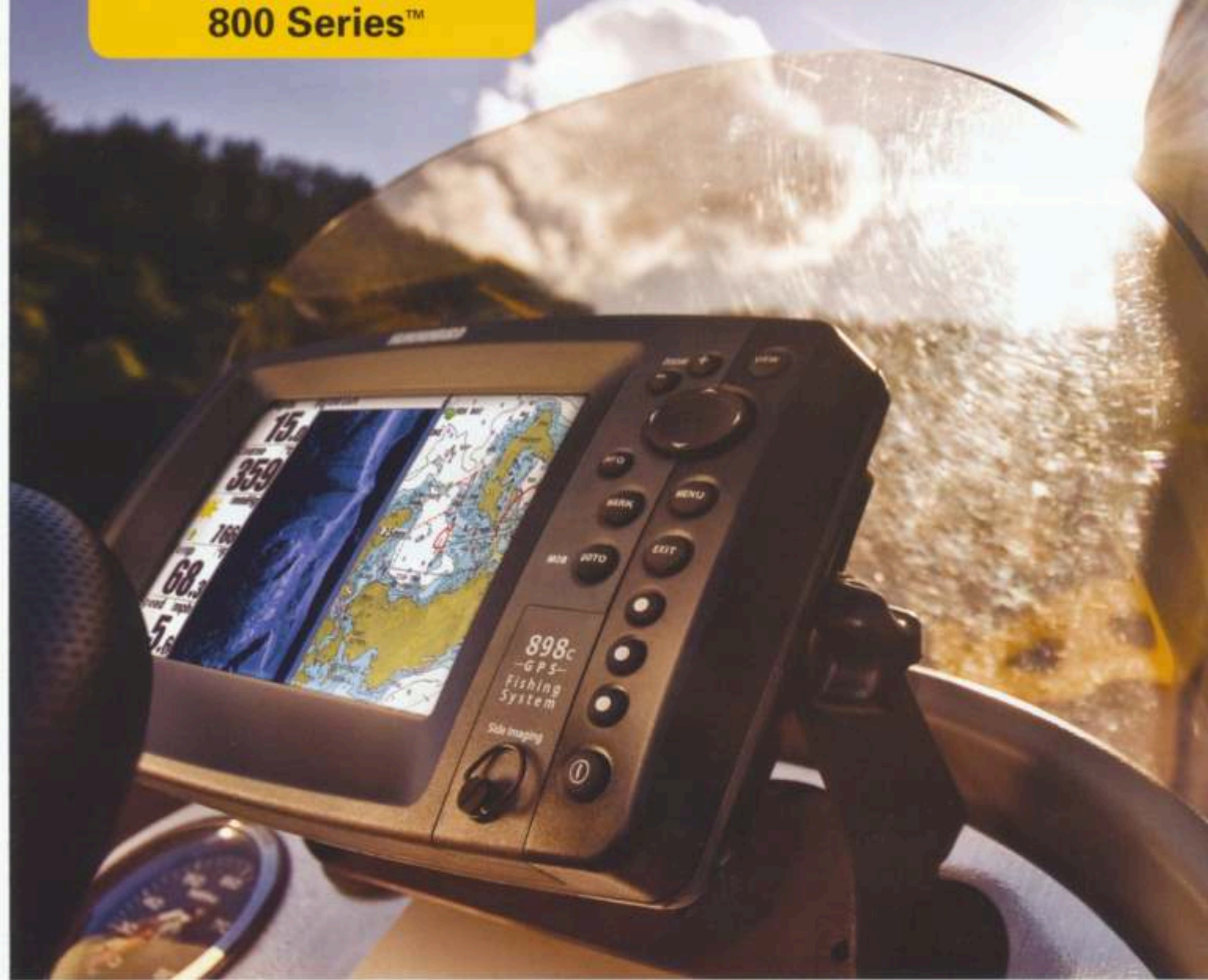
On Water Flexibility **Wide-Screen Advantage**

Dual, integrated SD Card Slots* give you maximum productivity from your Humminbird®. One slot gives you access to advanced cartography options, while leaving another open to save screen snapshots, sonar recording and waypoints.

The huge 8" HD screen provides crystal-clear images, and allows easy side-by-side viewing so you won't miss a thing.

*SD cards not supplied.

*Optional 1kw 50/200 kHz required for maximum power output.



898cx SI Combo BLA Code 104194



WAYNE FRIEBE

Tournament Angler & Fishing Writer

"Humminbird sounders are clear, accurate and very easy to use. Their sounders give me the most concise indications of bottom structure and density, which is crucial in shallow water sports fishing."



The 898cx SI Combo features a brilliant colour, wide screen 480V x 800H 7" display. Side Imaging™, Down Imaging™ and DualBeam PLUS™ sonar with up to 8000 watts* PTP power output, GPS chartplotting with built in UniMap™, and advanced Fishing System capabilities. Includes unit cover.



Display Size	7" Diagonal
Display Pixel Matrix	480V x 800H
Display Type	Colour TFT
Display Colours/Greyscale	65,000 colours
Sonar - Standard	HD Side Imaging®, Down Imaging™ and DualBeam PLUS™
Sonar Coverage	20°, 60° & 180° @ -10db
Sonar Frequency	200/63/455/800 kHz
Sonar Optional	QuadraBeam PLUS™
Target Separation	65mm
Power Output (max.)	1000 watts (RMS)* 8000 watts* (peak to peak)
Depth Capability	45m SI, 457m & 900m*
Temperature	Included
Speed	GPS speed included
Backlight	Yes
Waterproof	Yes
Unit Size Installed (Gimbal)	286W x 171H x 108D mm
Unit Size Installed (In-dash)	286W x 152H x 63.5D mm
Mount	Gimbal or optional in-dash
Transducer - BLA Code	103260
Transducer Mounting - Standard	Transom
Power Input	10-20VDC
GPS Receiver	50 Channel
Ethernet Networking	Yes

*Optional 1kw 50/200 kHz required for maximum power output.



If it's time to get serious, it's time for the new Humminbird® 800 Series™. These impressive combo units are a blend of form and function, with a generous 7" screen, featuring a 16:9 aspect ratio and incredibly clear picture quality. With Humminbird® Side Imaging™, Down Imaging™* and SwitchFire™ Sonar, the 800 Series puts you in control of the most versatile fish finding system on the water.

800 Series - generous HD screen, impressive combo features

You can take full-advantage of its advanced offerings as well, including GPS track and chartplotting with 50 channel GPS receiver and any of our Humminbird network modules. Everything about the 800 Series™ gives you the edge on the water.

Simply. Clearly. Better.

*898cx SI Combo unit only.

858cx Combo BLA Code 104190



The 858cx Combo features a brilliant colour, wide screen 480V x 800H 7" display, DualBeam PLUS™ sonar with up to 4000 watts* PTP power output, GPS chartplotting with built in UniMap™ and advanced Fishing System capabilities. Includes unit cover.



Display Size	7" Diagonal
Display Pixel Matrix	480V x 800H
Display Type	Colour TFT
Display Colours/Greyscale	65,000 colours
Sonar - Standard	DualBeam PLUS™
Sonar Coverage	60° @ -10db
Sonar Frequency	200/83 kHz
Sonar Optional	QuadraBeam PLUS™
Target Separation	65mm
Power Output (max.)	1000 watts (RMS)* 8000 watts* (peak to peak)
Depth Capability	457m & 900m*
Temperature	Included
Speed	GPS speed included
Backlight	Yes
Waterproof	Yes
Unit Size Installed (Gimbal)	286W x 171H x 108D mm
Unit Size Installed (In-dash)	286W x 152H x 63.5D mm
Mount	Gimbal or optional in-dash
Transducer - BLA Code	103303
Transducer Mounting - Standard	Transom
Power Input	10-20VDC
GPS Receiver	50 Channel
Ethernet Networking	Yes



On Water Flexibility **Wide-Screen Advantage**

Dual, integrated SD Card Slots* give you maximum productivity from your Humminbird®. One slot gives you access to advanced cartography options, while leaving another open to save screen snapshots, sonar recording and waypoints.

*SD cards not supplied.

The huge 7" HD screen provides crystal-clear images, and allows easy side-by-side viewing so you won't miss a thing.

*Optional 1kw 50/200 kHz required for maximum power output.

HD FOR H₂O



HD
5"
640V x 640H

Best in Class
Screen Resolution

Introducing the new, more versatile, High Definition 700 Series™ from Humminbird®. Featuring three programmable 'soft touch' buttons designed to switch effortlessly between your favourite views and settings. The sunlight viewable, 127mm diagonal ultra high resolution screen has 640V x 640H pixel clarity, providing unbelievable colour* and contrast.

700 Series – high performance, high resolution, connectivity

For combo and GPS units, the newly configured front access dual card slot makes card insertion and removal easier. Now front contained, the internal GPS receiver allows for confident in-dash installations. The built-in UniMap™ provides detail to 4NM around the coastlines of Australia and New Zealand. All GPS units remain fully upgradeable to Navionics® seamless cartography for the ultimate in mapping. With a wide range of DualBeam PLUS™, Side Imaging® and Down Imaging™ Sonar Fishing Systems available the choice is clear.

Simply. Clearly. Better.



*Humminbird® 778cx, 788cx & 788cxi Combo, 798cx and 798cxi SI Combo

798cxi HD SI Combo BLA Code 104138

788cxi HD DI Combo BLA Code 104134



The new 798cxi HD SI Combo features a brilliant colour, ultra-high resolution 640V x 640H 5" display, Side Imaging®, Down Imaging™ and DualBeam PLUS™ sonar with 4000 watts PTP power output, GPS Chartplotting with built-in UniMap™, and advanced Fishing System capabilities.



Display Size	5" diagonal
Display Pixel Matrix	640V x 640H
Display Type	Colour TFT
Display Colours/ Greyscale	256 colours
Sonar - Standard	Side Imaging®, Down Imaging™ and DualBeam PLUS™
Sonar Coverage	20°, 60° & 180° @ -10db
Sonar Frequency	200/83/455/800 kHz
Sonar Optional	QuadraBeam PLUS™
Target Separation	65mm
Power Output (max.)	500 watts (RMS) 4000 watts (peak to peak)
Depth Capability	45 m SI, 457 m
Temperature	Included
Speed	GPS speed included
Backlight	Yes
Waterproof	Yes
Unit Size Installed (Gimbal)	175W x 190 H x 116D mm
Unit Size Installed (In-dash)	17W x 137H x 32D mm
Mount	Quick disconnect, Optional in-dash
Transducer - Standard	103262
Transducer Mounting - Standard	Transom
Power Input	10-20VDC
GPS Receiver	50 Channel
Ethernet Networking	Yes



The new 788cxi HD DI features a brilliant colour, ultra-high resolution 640V x 640H 5" display, Down Imaging™ and DualBeam PLUS™ sonar with 4000 watts PTP power output, GPS Chartplotting with built-in UniMap™, and advanced Fishing System capabilities.



Display Size	5" diagonal
Display Pixel Matrix	640V x 640H
Display Type	Colour TFT
Display Colours/ Greyscale	256 colours
Sonar - Standard	Down Imaging™ and DualBeam PLUS™
Sonar Coverage	25°, 16°, 75° & 45° @ -10db
Sonar Frequency	200/455/800 kHz
Sonar Optional	QuadraBeam PLUS™
Target Separation	65mm
Power Output (max.)	500 watts (RMS) 4000 watts (peak to peak)
Depth Capability	75 m DI, 305 m
Temperature	Included
Speed	GPS speed included
Backlight	Yes
Waterproof	Yes
Unit Size Installed (Gimbal)	175W x 190 H x 116D mm
Unit Size Installed (In-dash)	17W x 137H x 32D mm
Mount	Quick disconnect, Optional in-dash
Transducer - Standard	103306
Transducer Mounting - Standard	Transom
Power Input	10-20VDC
GPS Receiver	50 Channel
Ethernet Networking	Yes

SHAUN CLANCY

Tournament Angler

"Since they began in the early '70's, Humminbird® Sounders and GPS units have always been the market leaders for innovation and ease of use."



788cxi HD Combo BLA Code 104131

BLA Code 104131B (includes Navionics® Gold AUS card)



The new 788cxi HD Combo features a brilliant colour, ultra-high resolution 640V x 640H 5" display, DualBeam PLUS™ sonar with 4000 watts PTP power output, GPS Chartplotting with built-in UniMap™, and advanced Fishing System capabilities.



Display Size	5" diagonal
Display Pixel Matrix	640V x 640H
Display Type	Colour TFT
Display Colours/ Greyscale	256 colours
Sonar - Standard	DualBeam PLUS™
Sonar Coverage	20° & 60° @ -10db
Sonar Frequency	200/83 kHz
Sonar Optional	QuadraBeam PLUS™
Target Separation	65mm
Power Output (max.)	500 watts (RMS) 4000 watts (peak to peak)
Depth Capability	457 m
Temperature	Included
Speed	GPS speed included
Backlight	Yes
Waterproof	Yes
Unit Size Installed (Gimbal)	175W x 190 H x 116D mm
Unit Size Installed (In-dash)	17W x 137H x 32D mm
Mount	Quick disconnect, Optional in-dash
Transducer - Standard	103303
Transducer Mounting - Standard	Transom
Power Input	10-20VDC
GPS Receiver	50 Channel
Ethernet Networking	Yes

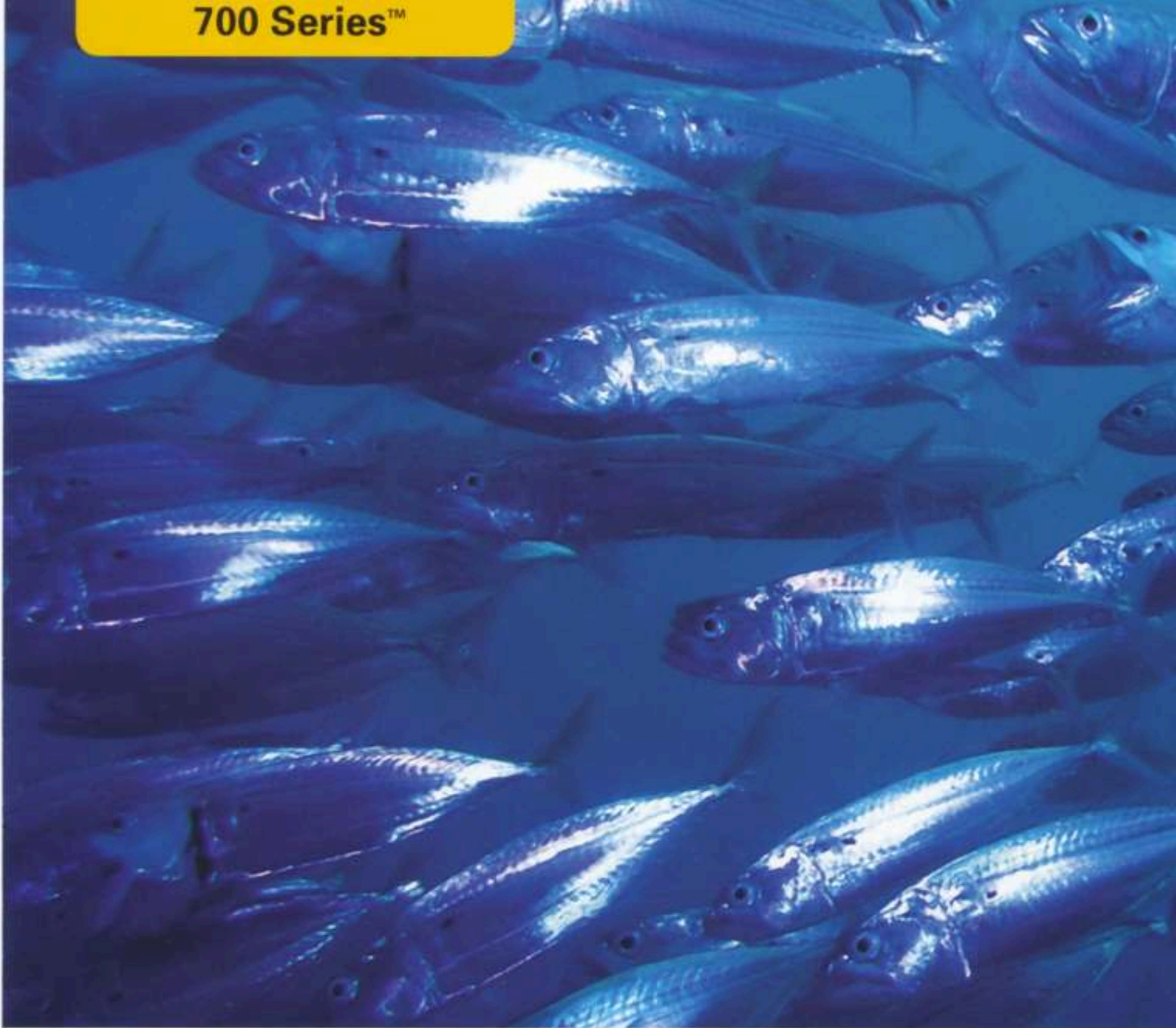
778cx HD BLA Code 104109



The new 778cx HD features a brilliant colour, ultra-high resolution 640V x 640H 5" display, DualBeam PLUS™ sonar with 4000 watts PTP power output, and advanced Fishing System capabilities. In addition, it includes three programmable preset buttons to save your favourite views & is GPS ready.



Display Size	5" diagonal
Display Pixel Matrix	640V x 640H
Display Type	Colour TFT
Display Colours/ Greyscale	256 colours
Sonar - Standard	DualBeam PLUS™
Sonar Coverage	20° & 60° @ -10db
Sonar Frequency	200/83 kHz
Sonar Optional	QuadraBeam PLUS™
Target Separation	65mm
Power Output (max.)	500 watts (RMS) 4000 watts (peak to peak)
Depth Capability	457 m
Temperature	Included
Speed	GPS speed included
Backlight	Yes
Waterproof	Yes
Unit Size Installed (Gimbal)	175W x 190 H x 116 D mm
Unit Size Installed (In-dash)	17W x 137H x 32D mm
Mount	Quick disconnect, Optional in-dash
Transducer - Standard	103303
Transducer Mounting - Standard	Transom
Power Input	10-20VDC
Ethernet Networking	Yes



▶ **728x** BLA Code 104103



The 728x features a high resolution 16 level greyscale 640V x 320H 5" diagonal display, DualBeam PLUS™ sonar with 4000 watts PTP power output, and advanced Fishing System capabilities.



Display Size	5" diagonal
Display Pixel Matrix	640V x 320H
Display Type	FSTN LCD
Display Colours/ Greyscale	16 level greyscale
Sonar - Standard	DualBeam PLUS™
Sonar Coverage	20° & 60° @ -10db
Sonar Frequency	200/83 kHz
Sonar Optional	QuadraBeam PLUS™
Target Separation	65mm
Power Output (max.)	500 watts (RMS) 4000 watts (peak to peak)
Depth Capability	457m
Temperature	Included
Speed	Capable
Backlight	Yes
Waterproof	Yes
Unit Size Installed (Gimbal)	175W x 190H x 116D mm
Unit Size Installed (In-dash)	175W x 137H x 32D mm
Mount	Quick disconnect, Optional in-dash
Transducer - Standard	103303
Transducer Mounting - Standard	Transom
Power Input	10-20VDC



➤ **718x** BLA Code 104101



The 718x features a high resolution 16 level grayscale 320V x 320H 5" display, DualBeam PLUS™ sonar with 2400 watts PTP power output, advanced Fishing System capabilities and is GPS ready.



Display Size	5" diagonal
Display Pixel Matrix	320V x 320H
Display Type	FSTN LCD
Display Colours/ Greyscale	16 level greyscale
Sonar - Standard	DualBeam PLUS™
Sonar Coverage	20° & 60° @ -10db
Sonar Frequency	200/83 kHz
Sonar Optional	QuadraBeam PLUS™
Target Separation	65mm
Power Output (max.)	300 watts (RMS) 2400 watts (peak to peak)
Depth Capability	305m
Temperature	Included
Speed	Capable
Backlight	Yes
Waterproof	Yes
Unit Size Installed (Gimbal)	175W x 190H x 116D mm
Unit Size Installed (In-dash)	175W x 137H x 32D mm
Mount	Quick disconnect, Optional in-dash
Transducer - Standard	103303
Transducer Mounting - Standard	Transom
Power Input	10-20VDC



HD
5"
640V x 640H

See more of what's down there – for less. Humminbird® 500 Series™ models now offer best-in-class, HD screen resolution along with picture like Down Imaging™ Sonar*.

See what's below

Timber, rocks, even fish, watch it all take shape on crystal clear full 4.5" & 5" colour or 5" monochrome displays. With screens that size, it's easy to take advantage of versatile DualBeam PLUS™ Sonar and exclusive Humminbird® SwitchFire™ technology. We're taking a beam sensitive enough to track a jig down to 25 metres and separate fish as close as 65mm apart. Find your way with optional Navionics® cartography. Get all this technology in a convenient in-dash mount, or use our Tilt & Swivel Disconnect Mounting System. With the 500 Series™, big things are bound to happen.



Simply. Clearly. Better.



*Humminbird® 597cxi HD DI, 596cxi HD DI and 570cxi DI units only.

597cxi HD DI Combo *BLA Code 102454*



The new 597cxi HD DI Combo features a brilliant colour 640V x 640H 5" display, Down Imaging™ and Dual Beam PLUS™ sonar with 2400 watts PTP power output, 50 channel internal GPS Chartplotting with built-in UniMap, and tilt & swivel quick disconnect mounting system.



Display Size	5" diagonal
Display Pixel Matrix	640V x 640H
Display Type	Colour TFT
Display Colours/ Greyscale	256 colours
Sonar - Standard	Down Imaging™ and DualBeam Plus™
Sonar Coverage	25°, 16°, 75° & 45° @ -10db
Sonar Frequency	200/455/800 kHz
Target Separation	65mm
Power Output (max.)	300 watts (RMS) 2400 watts (peak to peak)
Depth Capability	DI 75m, DB 305m
Temperature	Included
Speed	GPS speed included
Backlight	Yes
Waterproof	Yes
Unit Size Installed (Gimbal)	175W x 190.5H x 114D mm
Unit Size Installed (In-dash)	175W x 137H x 32D mm
Mount	Quick disconnect, Optional in-dash
Transducer - Standard	103306
Transducer	Transom
Mounting - Standard	Transom
Power Input	10-20VDC

597cxi HD Combo *BLA Code 102452*



The new 597cxi HD Combo features a brilliant colour 640V x 640H 5" display, Dual Beam PLUS™ sonar with 4000 watts PTP power output, 50 channel internal GPS Chartplotting with built-in UniMap, and tilt & swivel quick disconnect mounting system.



Display Size	5" diagonal
Display Pixel Matrix	640V x 640H
Display Type	Colour TFT
Display Colours/ Greyscale	256 colours
Sonar - Standard	DualBeam Plus™
Sonar Coverage	20° & 60° @ -10db
Sonar Frequency	200/83 kHz
Target Separation	65mm
Power Output (max.)	500 watts (RMS) 4000 watts (peak to peak)
Depth Capability	457m
Temperature	Included
Speed	GPS speed included
Backlight	Yes
Waterproof	Yes
Unit Size Installed (Gimbal)	175W x 190.5H x 114D mm
Unit Size Installed (In-dash)	175W x 137H x 32D mm
Mount	Quick disconnect, Optional in-dash
Transducer - Standard	103303
Transducer	Transom
Mounting - Standard	Transom
Power Input	10-20VDC

NIGEL WEBSTER

Fishing Writer & Tournament Angler

"Humminbird® are constantly improving their product. The quality of the detail I can now see below (and to the sides) of my boat is mind blowing. I no longer question where the fish are, just how to catch them."



596cx HD DI *BLA Code 102448*



The new 596cx HD DI features a brilliant colour 640V x 640H 5" display, Down Imaging™ Dual Beam PLUS™ sonar with 2400 watts ptp power output, and tilt & swivel quick disconnect mounting system.



Display Size	5" diagonal
Display Pixel Matrix	640V x 640H
Display Type	Colour TFT
Display Colours/ Greyscale	256 colours
Sonar - Standard	Down Imaging™ and DualBeam Plus™
Sonar Coverage	25°, 16°, 75° & 45° @ -10db
Sonar Frequency	200/455 & 800kHz
Target Separation	65mm
Power Output (max.)	300 watts (RMS) 24000 watts (peak to peak)
Depth Capability	DI 75m, DB 305m
Temperature	Included
Speed	Capable
Backlight	Yes
Waterproof	Yes
Unit Size Installed (Gimbal)	175W x 190.5H x 114D mm
Unit Size Installed (In-dash)	175W x 137H x 32D mm
Mount	Quick disconnect, Optional in-dash
Transducer - Standard	103306
Transducer Mounting - Standard	Transom
Power Input	10-20VDC

596cx HD *BLA Code 102446*



The new 596cx HD features a brilliant colour 640V x 640H 5" display, Dual Beam PLUS™ sonar with 4000 watts ptp power output, and tilt & swivel quick disconnect mounting system.



Display Size	5" diagonal
Display Pixel Matrix	640V x 640H
Display Type	Colour TFT
Display Colours/ Greyscale	256 colours
Sonar - Standard	DualBeam PLUS™
Sonar Coverage	20° & 60° @ -10db
Sonar Frequency	200/83 kHz
Target Separation	65mm
Power Output (max.)	500 watts (RMS) 4000 watts (peak to peak)
Depth Capability	457m
Temperature	Included
Speed	Capable
Backlight	Yes
Waterproof	Yes
Unit Size Installed (Gimbal)	175W x 190.5H x 114D mm
Unit Size Installed (In-dash)	175W x 137H x 32D mm
Mount	Quick disconnect, Optional in-dash
Transducer - Standard	103303
Transducer Mounting - Standard	Transom
Power Input	10-20VDC



CARL JOCUMSEN

Tournament Angler

"Along with my Minn Kota® my Humminbird® is the most important piece of equipment I have. If I didn't have the right tools I wouldn't get the results."

587cxi HD Combo BLA Code 102442

BLA Code 102442B (includes Navionics® Gold AUS card)



Display Size	4.5" diagonal
Display Pixel Matrix	640V x 480H
Display Type	Colour TFT
Display Colours/ Greyscale	256 colours
Sonar - Standard	DualBeam PLUS™
Sonar Coverage	20° & 60° @ -10db
Sonar Frequency	200/83 kHz
Target Separation	65mm
Power Output (max.)	300 watts (RMS) 2400 watts (peak to peak)
Depth Capability	305m
Temperature	Included
Speed	GPS speed included
Backlight	Yes
Waterproof	Yes
Unit Size Installed (Gimbal)	175W x 190.5H x 114D mm
Unit Size Installed (In-dash)	175W x 137H x 32D mm
Mount	Quick disconnect, Optional in-dash
Transducer - Standard	103303
Transducer Mounting - Standard	Transom
Power Input	10-20VDC

The new 587cxi HD Combo features a brilliant colour 640V x 480H 4.5" display, Dual Beam PLUS™ with 2400 watts PTP power output, 50 channel internal GPS Chartplotting with built-in UniMap™, and tilt & swivel quick disconnect mounting system.



586cx HD BLA Code 102438



The new 586cx HD features a brilliant colour 640V x 480H 4.5" display, Dual Beam PLUS™ sonar with 2400 watts PTP power output, and tilt & swivel quick disconnect mounting system.



Display Size	4.5" diagonal
Display Pixel Matrix	640V x 480H
Display Type	Colour TFT
Display Colours/ Greyscale	256 colours
Sonar - Standard	Dual Beam PLUS™
Sonar Coverage	20° & 60° @ -10db
Sonar Frequency	200/83 kHz
Target Separation	65mm
Power Output (max.)	300 watts (RMS) 2400 watts (peak to peak)
Depth Capability	305m
Temperature	Included
Speed	Capable
Backlight	Yes
Waterproof	Yes
Unit Size Installed (Gimbal)	175W x 190.5H x 114D mm
Unit Size Installed (In-dash)	175W x 137H x 32D mm
Mount	Quick disconnect, Optional in-dash
Transducer - Standard	103303
Transducer Mounting - Standard	Transom
Power Input	10-20VDC



The new 570x DI features an ultra high resolution 16 level greyscale 640V x 320H 5" display, Down Imaging™ and Dual Beam PLUS™ sonar with 2400 watts PTP power output.





BLA Code 102434

❖ **570x** BLA Code 102411

❖ **560x** BLA Code 102430

Display Size	5" diagonal
Display Pixel Matrix	640V x 320H
Display Type	FSTN LCD
Display Colours/ Greyscale	16 level greyscale
Sonar - Standard	Down Imaging™ & Dual Beam PLUS™
Sonar Coverage	25°, 16°, 75° & 45° @ -10db
Sonar Frequency	200/455/800kHz
Target Separation	65mm
Power Output (max.)	300 watts (RMS) 2400 watts (peak to peak)
Depth Capability	75m DI, DB 305m
Temperature	Included
Speed	Capable
Backlight	Yes
Waterproof	Yes
Unit Size Installed (Gimbal)	175W x 190.5H x 114D mm
Mount	Quick disconnect, Optional in-dash
Transducer - Standard	103306
Transducer Mounting - Standard	Transom
Power Input	10-20VDC



The 570x features an ultra high resolution 12 level greyscale 640V x 320H 5" display and Dual beam sonar with 2000 watts PTP power output.



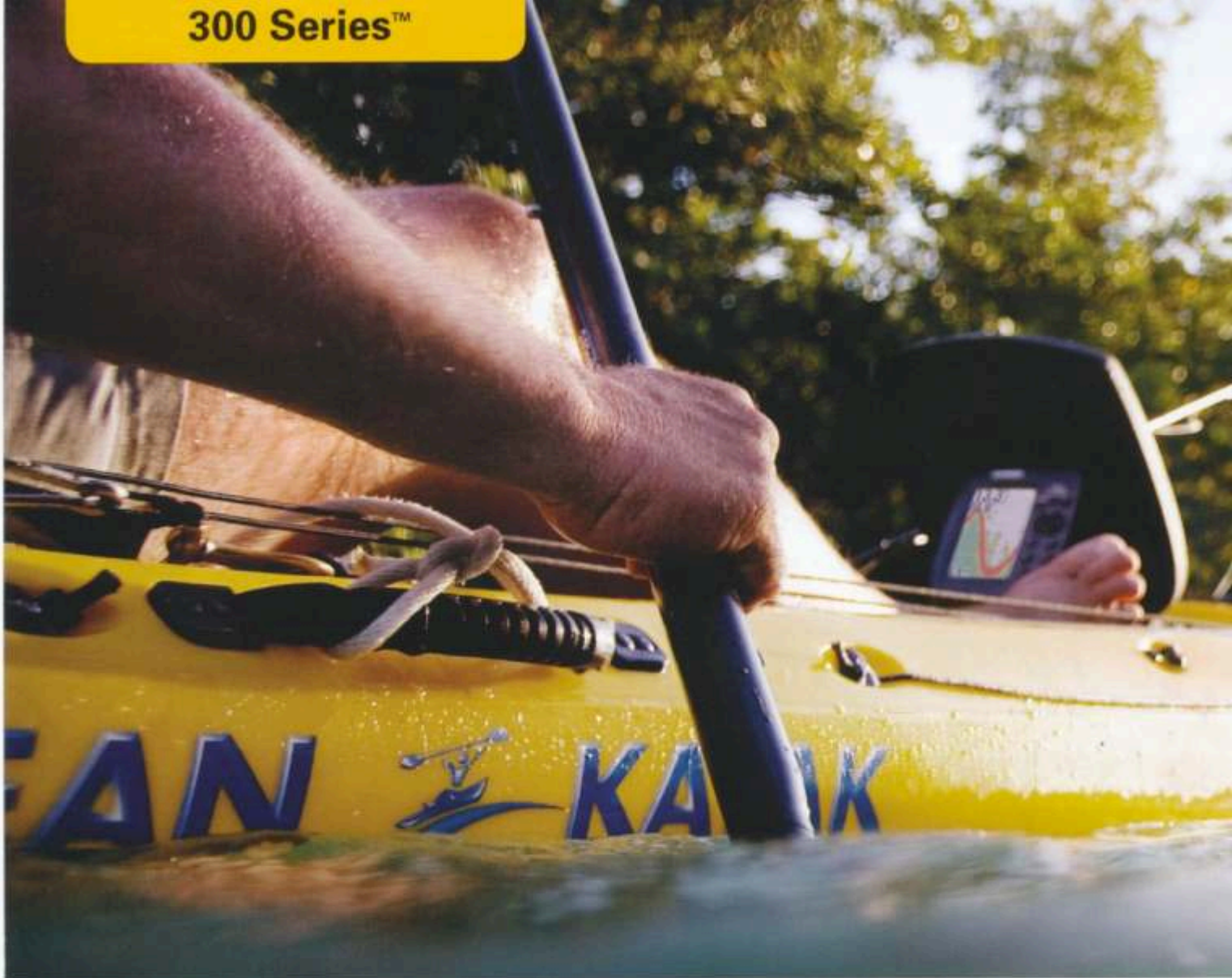
Display Size	5" diagonal
Display Pixel Matrix	640V x 320H
Display Type	FSTN LCD
Display Colours/ Greyscale	12 level greyscale
Sonar - Standard	Dual beam
Sonar Coverage	20° & 60° @ -10db
Sonar Frequency	200/83 kHz
Target Separation	65mm
Power Output (max.)	250 watts (RMS) 2000 watts (peak to peak)
Depth Capability	244m
Temperature	Included
Speed	Capable
Backlight	Yes
Waterproof	Yes
Unit Size Installed (Gimbal)	175W x 190.5H x 114D mm
Mount	Quick disconnect, Optional in-dash
Transducer - Standard	103303
Transducer Mounting - Standard	Transom
Power Input	10-20VDC



The new 560x features a 12 level greyscale 320V x 320H 5" display and single beam sonar with 1600 watts PTP power output.



Display Size	5" Diagonal
Display Pixel Matrix	320V x 320H
Display Type	FSTN LCD
Display Colours/ Greyscale	12 level greyscale
Sonar - Standard	Single beam
Sonar Coverage	20° @ -10db
Sonar Frequency	200kHz
Target Separation	65mm
Power Output (max.)	200 watts (RMS) 1600 watts (peak to peak)
Depth Capability	244 m
Temperature	Included
Speed	Capable
Backlight	Yes
Waterproof	Yes
Unit Size Installed (Gimbal)	175W x 190.5H x 114D mm
Mount	Quick disconnect, Optional in-dash
Transducer - Standard	103303
Transducer Mounting - Standard	Transom
Power Input	10-20VDC



385cxi Combo *BLA Code 102546*



The 385cxi Combo features a brilliant colour 320V x 240H 3.5" display, advanced Dual Beam PLUS™ sonar with 2400 watts PTP power output, and GPS Chartplotting with built-in UniMap™ and upgrade to optional Navionics Gold Cartography.



Display Size	3.5" diagonal
Display Pixel Matrix	320V x 240H
Display Type	Colour TFT
Display Colours/ Greyscale	256 colours
Sonar - Standard	DualBeam PLUS™
Sonar Coverage	20° & 60° @ -10db
Sonar Frequency	200/83 kHz
Target Separation	65mm
Power Output (max.)	300 watts (RMS) 2400 watts (peak to peak)
Depth Capability	305m
Temperature	Included
Speed	GPS speed included
Backlight	Yes
Waterproof	Yes
Unit Size Installed (Gimbal)	133W x 188H x 102D mm
Unit Size Installed (In-dash)	133W x 188H x 102D mm
Mount	Quick disconnect Optional in-dash
Transducer - Standard	103303
Transducer Mounting - Standard	Transom
Power Input	10-20VDC

365xi Combo *BLA Code 102544*



The 365xi Combo features a high resolution 16 level greyscale 320V x 240H 4" display, Dual Beam PLUS™ sonar with 2400 watts PTP power output, and GPS Chartplotting with built-in UniMap™ and upgrade to optional Navionics Gold Cartography.



Display Size	4" diagonal
Display Pixel Matrix	320V x 240H
Display Type	FSTN LCD
Display Colours/ Greyscale	16 level greyscale
Sonar - Standard	DualBeam PLUS™
Sonar Coverage	20° & 60° @ -10db
Sonar Frequency	200/83 kHz
Target Separation	65mm
Power Output (max.)	300 watts (RMS) 2400 watts (peak to peak)
Depth Capability	305m
Temperature	Included
Speed	GPS speed included
Backlight	Yes
Waterproof	Yes
Unit Size Installed (Gimbal)	133W x 188H x 102D mm
Unit Size Installed (In-dash)	133W x 188H x 102D mm
Mount	Quick disconnect Optional in-dash
Transducer - Standard	103303
Transducer Mounting - Standard	Transom
Power Input	10-20VDC

The Humminbird® 300 Series™ is designed for those who demand top-of-the-line technology, but don't have space for a bigger fishfinder. With oceans of new features, the 300 Series™ performs way beyond its size, and is right at home in the most extreme fishing situations.

300 Series – the world's biggest compact fishfinder



Both colour and monochrome displays are available with exclusive SwitchFire™ technology, so you'll get the most out of the DualBeam Sonar that gives you wide coverage with the best picture of the bottom. It's powerful sonar technology built into a pint-size package. With internal GPS and built-in UniMap™ you'll be able to pinpoint your position with ease. A built-in card slot allows you to upgrade to a Navionics® card for enhanced navigation and map detail. If you need to save space, but don't want to compromise performance, look no further than the all-new 300 Series™.

Simply. Clearly. Better.

345cx BLA Code 102538



The 345cx features a brilliant colour 320V x 240H 3.5" display and advanced Dual Beam PLUS™ sonar with 2400 watts PTP power output.



Display Size	3.5" diagonal
Display Pixel Matrix	320V x 240H
Display Type	Colour TFT
Display Colours/ Greyscale	256 colours
Sonar - Standard	DualBeam PLUS™
Sonar Coverage	20° & 60° @ -10db
Sonar Frequency	200/83 kHz
Target Separation	65mm
Power Output (max.)	300 watts (RMS) 2400 watts (peak to peak)
Depth Capability	305m
Temperature	Included
Speed	Capable
Backlight	Yes
Waterproof	Yes
Unit Size Installed (Gimbal)	133W x 188H x 102D mm
Unit Size Installed (In-dash)	133W x 188H x 102D mm
Mount	Quick disconnect, Optional in-dash
Transducer - Standard	103303
Transducer Mounting - Standard	Transom
Power Input	10-20VDC



On Water Flexibility

The integrated SD Card Slot* gives you maximum productivity.

- Compatible with Navionics® Gold
- Save a screen snapshot of your favourite spot
- Record your sonar readings to replay over and over
- Save waypoints and other locations of interest.

*SD cards not supplied.

With one button, the NEW PiranhaMAX™ range packs a bite with a range of innovative products that cover the full spectrum of the market. One touch – that's all it takes to get easy access to all the advanced features of the PiranhaMAX™ series of fishfinders. Quickly access Fish ID+, fish alarms, depth alarms, zoom and more. Available in single, dual or Tri beam models each offering different advantages and bottom coverage.

PiranhaMAX™ – low cost, compact, simple to operate!

New improved head design offers contrast enhanced clear edge greyscale LCD or colour TFT displays ensuring you'll see more on screen – even in direct sunlight.

Simplicity and performance!

Simply. Clearly. Better.



❖ PiranhaMAX™ 190cx BLA Code 102494



Display Size	3.5" diagonal
Display Pixel Matrix	320V x 240H
Display Type	Colour TFT
Display Colours/ Greyscale	256 colours
Sonar - Standard	Single beam
Sonar Coverage	20° @ -10db
Sonar Frequency	200 kHz
Target Separation	65mm
Power Output (max.)	200 watts (RMS) 1600 watts (peak to peak)
Depth Capability	244m
Temperature	Included
Backlight	Yes
Waterproof	Yes
Unit Size	122W x 157H x 84D mm
Mount	Tilt and swivel or optional in-dash
Transducer - Standard	103303
Transducer Mounting - Standard	Inside hull or transom
Power Input	10-20VDC

The PiranhaMAX™ 190cx features a 256 colour 320V x 240H 3.5" display and single beam sonar with 1600 watts PTP power output.



❖ PiranhaMAX™ 180x BLA Code 102492



Display Size	4" diagonal
Display Pixel Matrix	240V x 160H
Display Type	FSTN LCD
Display Colours/ Greyscale	8 level greyscale
Sonar - Standard	Tri beam
Sonar Coverage	20° & 35° (Z) @ -10db 90° Total Coverage
Sonar Frequency	200/455 kHz
Target Separation	65mm
Power Output (max.)	200 watts (RMS) 1600 watts (peak to peak)
Depth Capability	244 m
Temperature	Included
Backlight	Yes
Waterproof	Yes
Unit Size	122W x 157H x 84D mm
Mount	Tilt and swivel or optional in-dash
Transducer - Standard	103333
Transducer Mounting - Standard	Inside hull or transom
Power Input	10-20VDC

The PiranhaMAX™ 180x features a high resolution 8 level greyscale 240V x 160H 4" display and Tri Beam sonar with 1600 watts PTP power output.

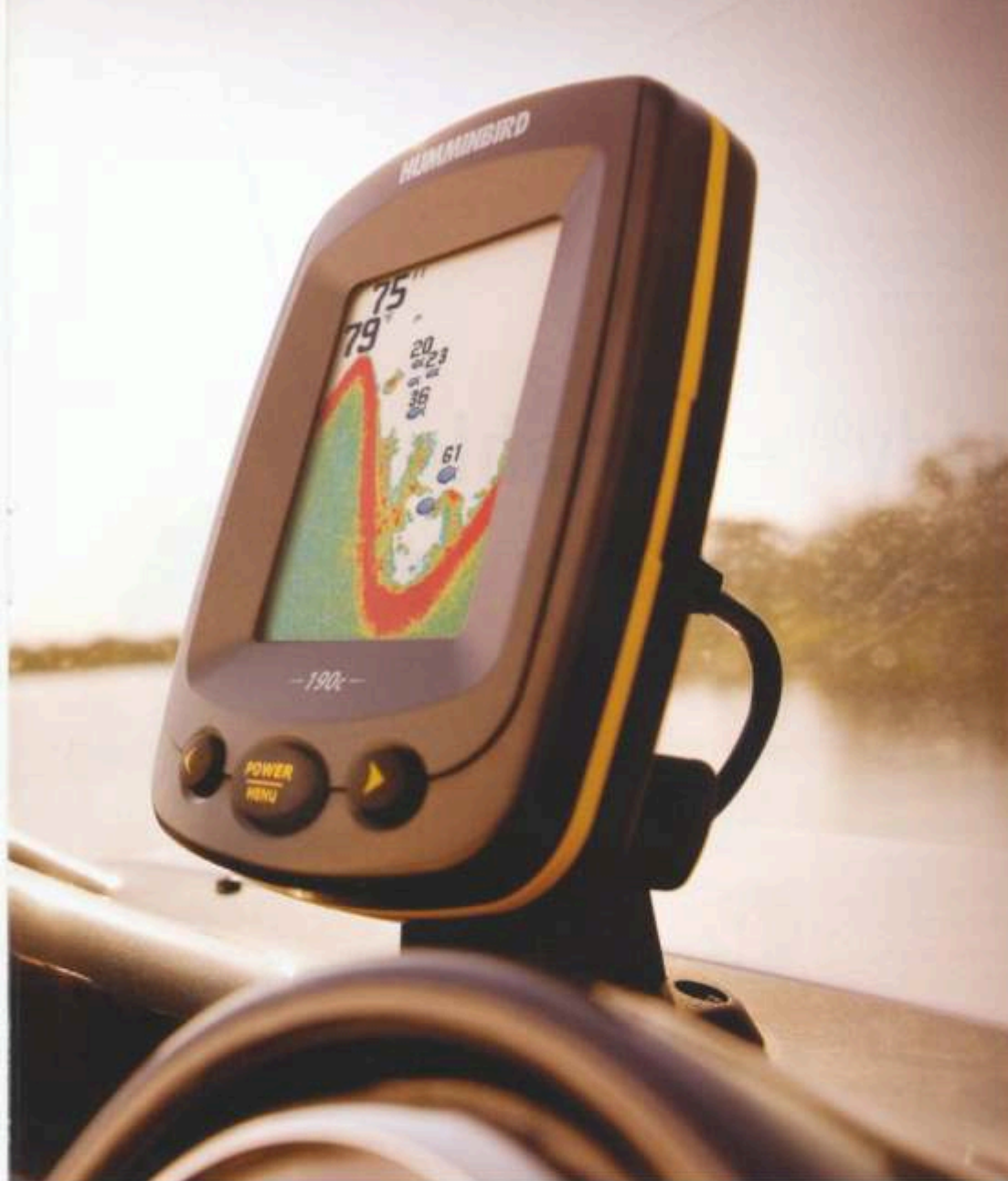


❖ PiranhaMAX™ 170x



The new PiranhaMAX™ 170x features a high resolution 4 level greyscale 240V x 160H 4" display and dual beam sonar with 1600 watts PTP power output.





TAKE IT WITH YOU.

Now it's even easier to take the #1 fishfinder on all your fishing adventures. Several PiranhaMAX™ models are available with optional equipment to make them travel friendly. Never miss a fish, no matter how far away you are from home, with PiranhaMAX™ portables.

- Soft-shell carry case
- Suction cup transducer
- Integral cable storage



Available in:

PiranhaMAX™ 160x Portable*

PiranhaMAX™ 150x Portable*

*Battery not included

Portable units require 12V 7amp sealed battery BLA Code 526216

Battery Charger BLA Code 526224

BLA Code 102490

❖ PiranhaMAX™ 160x 160x Portable

BLA Code 102488

BLA Code 102489

Display Size	4" diagonal
Display Pixel Matrix	240V x 160H
Display Type	FSTN LCD
Display Colours/ Greyscale	8 level greyscale
Sonar - Standard	Dual beam
Sonar Coverage	20° & 60° @ -10db
Sonar Frequency	200/83 kHz
Target Separation	65mm
Power Output (max.)	200 watts (RMS) 1600 watts (peak to peak)
Depth Capability	244m
Temperature	Included
Backlight	Yes
Waterproof	Yes
Unit Size	122W x 157H x 84D mm
Mount	Tilt and swivel or optional in-dash
Transducer - Standard	103303
Transducer Mounting - Standard	Inside hull or transom
Power Input	10-20VDC



The PiranhaMAX™ 160x features a 4 level greyscale 160V x 128H 4" display and dual beam sonar with 800 watts PTP power output.



Display Size	4" diagonal
Display Pixel Matrix	160V x 128H
Display Type	FSTN LCD
Display Colours/ Greyscale	4 level greyscale
Sonar - Standard	Dual beam
Sonar Coverage	20° & 60° @ -10db
Sonar Frequency	200/83 kHz
Target Separation	65mm
Power Output (max.)	100 watts (RMS) 800 watts (peak to peak)
Depth Capability	180m
Temperature	Included
Backlight	Yes
Waterproof	Yes
Unit Size	122W x 157H x 84D mm
Mount	Tilt and swivel or optional in-dash
Transducer - Standard	103303
Transducer Mounting - Standard	Inside hull or transom
Power Input	10-20VDC



The PiranhaMAX™ 150x features a 4 level greyscale 160V x 128H 4" display and single beam sonar with 800 watts PTP power output.



❖ PiranhaMAX™ 150x 150x Portable

BLA Code 102486

BLA Code 102487

Display Size	4" diagonal
Display Pixel Matrix	160V x 128H
Display Type	FSTN LCD
Display Colours/ Greyscale	4 level greyscale
Sonar - Standard	Single beam
Sonar Coverage	20° @ -10db
Sonar Frequency	200 kHz
Target Separation	65mm
Power Output (max.)	100 watts (RMS) 800 watts (peak to peak)
Depth Capability	180m
Temperature	Included
Backlight	Yes
Waterproof	Yes
Unit Size	122W x 157H x 84D mm
Mount	Tilt and swivel or optional in-dash
Transducer - Standard	103303
Transducer Mounting - Standard	Inside hull or transom
Power Input	10-20VDC

Fishin' Buddy®

Use it on your boat, your mate's boat, a jetty, or even a canoe or kayak. Humminbirds Fishin' Buddy® Fishfinders give you the ultimate choice in portability by incorporating a multi-directional mount and integral battery pack and transducer. Best of all there are no wires to contend with.

Fishin' Buddy® – portable, self contained, battery powered

You'll also love the high resolution monochrome and colour displays and powerful SideFinding™ sonar that you can point in nearly any direction to find more fish. The transducer pole reaches the water from most small or mid-size fishing boats. We've even made the Fishin' Buddy® easy to use, with One-Touch® control for access to all the advanced features and even Selective Fish ID®. Finally, just six AA batteries* will supply all the power you need for hours of enjoyment fishing out on the water.

Simply. Clearly. Better.



*Batteries not supplied



➤ 140cx Fishin' Buddy BLA Code 102482



The 140cx Fishin' Buddy® offers a 256 colour TFT 320V x 240H 3.5" display, down and side looking sonar with 1000 watts PTP power output. The ultimate in portability, with an ergonomic clamp mount designed to use nearly anywhere. No rigging, wiring or transducer to mount.

Display Size	3.5" diagonal
Display Pixel Matrix	320V x 240H
Display Type	TFT LCD
Display Colours/ Greyscale	256 colours
Sonar	Down/Side
Sonar Coverage	34° & 10° @ -10db
Sonar Range	200/455 kHz
Target Separation	65mm
Power Output (RMS)	125 watts (RMS) 1000 watts (peak-to-peak)
Temperature	Included
Backlight	Yes
Waterproof	Yes
Mount	Portable clamp
Transducer Pole	610 - 1016mm telescopic pole
Battery Life*	18hrs

*Approximate battery life



➤ 120x Fishin' Buddy BLA Code 102474



The 120x Fishin' Buddy® offers a 8 level monochrome 240v x 160h 4" display, down and side looking sonar with 1000 watts PTP power output. The ultimate in portability, with an ergonomic clamp mount designed to use nearly anywhere. No rigging, wiring or transducer to mount.

Display Size	4" diagonal
Display Pixel Matrix	240V x 160H
Display Type	FSTN LCD
Display Colours/ Greyscale	8 level greyscale
Sonar	Down/Side
Sonar Coverage	34° & 10° @ -10db
Sonar Range	200/455 kHz
Target Separation	65mm
Power Output (RMS)	125 watts (RMS) 1000 watts (peak-to-peak)
Temperature	Included
Backlight	Yes
Waterproof	Yes
Mount	Portable clamp
Transducer Pole	610mm fixed pole
Battery Life*	30hrs

*Approximate battery life



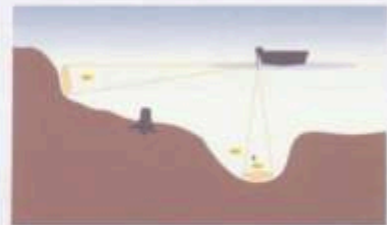


NO-RIG MOUNT



With the multi-directional clamp mount on each Fishin' Buddy® you can quickly and easily mount it nearly anywhere, in any orientation. Best of all, there are no wires or rigging, period.

POINT AND CAST



SideFinding™: Exclusive SideFinding™ Sonar spots fish all around your boat, out to 36 metres. Simply turn it in the direction you want to search and with its narrow cone, when you see a fish on screen your transducer is pointing directly at it, so you know exactly where to cast.

❖ 110x Fishin' Buddy BLA Code 102470



The 110x Fishin' Buddy® offers a 4 level monochrome 160v x 128h 4" display, single beam sonar with 1000 watts ptp power output. The ultimate in portability, with an ergonomic clamp mount designed to use nearly anywhere. No rigging, wiring or transducer to mount.



Display Size	4" diagonal
Display Pixel Matrix	160v x 128h
Display Type	FSTN LCD
Display Colours/ Greyscale	4 level greyscale
Sonar	Single beam down
Sonar Coverage	34° @ -10db
Sonar Range	200 kHz
Target Separation	65mm
Power Output (RMS)	125 watts (RMS) 1000 watts (peak-to-peak)
Temperature	Included
Backlight	Yes
Waterproof	Yes
Mount	Portable clamp
Transducer Pole	610mm fixed pole
Battery Life*	30hrs

*Approximate battery life

❖ Accessories



Carry Case - *BLA Code 102206*



Mount Bracket - *BLA Code 103718*

Specifications



1100 Series

Model	1198cx SI Combo	1156cx Combo
Display Size	10.4" diagonal	10.4" diagonal
Display Pixel Matrix	600V x 800H	600V x 800H
Display Type	Colour TFT	Colour TFT
Display Colours/Greyscale	65,000 colours	65,000 colours
Sonar - Standard	HD Side Imaging [®] , Down Imaging [™] and Dual beam PLUS [™]	DualBeam PLUS [™]
Sonar Coverage	20', 60' & 180' @ -10db	20' & 60' @ -10db
Sonar Frequency	200/83/455/800 kHz	200/83 kHz
Sonar Optional	QuadraBeam PLUS [™]	QuadraBeam PLUS [™]
Target Separation	65mm	65mm
Power Output (max.)	1000 watts (RMS)* 8000 watts* (peak to peak)	1000 watts (RMS)* 8000 watts* (peak to peak)
Depth Capability	45m SI, 457m & 900m*	457m & 900m*
Temperature	Yes	Yes
Speed	GPS speed included	GPS speed included
Backlight	Yes	Yes
Waterproof	Yes	Yes
Unit Size - Gimbal Mount	332W x 236H x 73.66D mm	332W x 236H x 73.66D mm
Mount	Gimbal or In-dash	Gimbal or In-dash
Transducer - Standard	103260	103303
Transducer Mounting - Standard	Transom	Inside hull or transom
Power Input	10-20VDC	10-20VDC

GPS Features

GPS Receiver	●	●
GPS Trackplotting	●	●
GPS Chartplotting	●	●
Waypoints, Routes, Tracks/Points	3,000, 50, 50/20,000	3,000, 50, 50/20,000
Humminbird UniMap	●	●
Navionics Gold	○	○
Navionics Platinum	○	○

Optional Add-Ons

GPS Receiver	●	●
WeatherSense	○	○
Wireless Sonar Link	—	—
CannonLink	○	○
InterLink	○	○
HumminbirdPC	○	○
Upgradeable Internal Software	○	○
Ethernet Networking	○	○

User Features:

Screen Snap Shot to Memory Card	●	●
Sonar Recording	●	●
Split Screen Zoom	●	●
Split Screen Bottom Lock	●	●
3D Chart View	●	●
Large Digits View	●	●
Wide/Narrow Cone Split Screen	●	●
Custom Digital Readout Selection	●	●
Selectable Display Colours	●	●
View Pre-Set Keys	●	●
Temperature Graph	●	●
Temperature Alarm	●	●
TrueArch [®] Technology	●	●
Freeze Frame	●	●
Instant Image Update	●	●
Mark Structure on Sonar	●	●
Selective Fish ID+	●	●
Real Time Sonar	●	●
Sonar Echo Enhancement	●	●
Triplog	●	●
X-Press [™] Menu System	●	●



900 Series

Model	998cx SI Combo	958cx Combo
Display Size	8" diagonal	8" diagonal
Display Pixel Matrix	480V x 800H	480V x 800H
Display Type	Colour TFT	Colour TFT
Display Colours/Greyscale	65,000 colours	65,000 colours
Sonar - Standard	HD Side Imaging [®] , Down Imaging [™] and Dual beam PLUS [™]	DualBeam PLUS [™]
Sonar Coverage	20', 60' & 180' @ -10db	20' & 60' @ -10db
Sonar Frequency	200/83/455/800 kHz	200/83 kHz
Sonar Optional	QuadraBeam PLUS [™]	QuadraBeam PLUS [™]
Target Separation	65mm	65mm
Power Output (max.)	1000 Watts (RMS)* 8000 watts* (peak to peak)	1000 Watts (RMS)* 8000 watts* (peak to peak)
Depth Capability	45m SI, 457m & 900m*	457m & 900m*
Temperature	Included	Included
Speed	GPS speed included	GPS speed included
Backlight	Yes	Yes
Waterproof	Yes	Yes
Unit Size - Gimbal Mount	286W x 171H x 108D mm	286W x 171H x 108D mm
Unit Size - In-Dash Mount	286W x 152H x 63.5D mm	286W x 152H x 63.5D mm
Mount	Gimbal or In-dash	Gimbal or In-dash
Transducer - Standard	103260	103303
Transducer Mounting - Standard	Transom	Inside hull or transom
Power Input	10-20VDC	10-20VDC

GPS Features

GPS Receiver	●	●
GPS Trackplotting	●	●
GPS Chartplotting	●	●
Waypoints, Routes, Tracks/Points	3,000, 50, 50/20,000	3,000, 50, 50/20,000
Humminbird UniMap	●	●
Navionics Gold	○	○
Navionics Platinum	○	○

Optional Add-Ons

GPS Receiver	●	●
WeatherSense	○	○
Wireless Sonar Link	—	—
CannonLink	○	○
InterLink	○	○
HumminbirdPC	○	○
Upgradeable Internal Software	○	○
Ethernet Networking	○	○

User Features:

Screen Snap Shot to Memory Card	●	●
Sonar Recording	●	●
Split Screen Zoom	●	●
Split Screen Bottom Lock	●	●
3D Chart View	●	●
Large Digits View	●	●
Wide/Narrow Cone Split Screen	●	●
Custom Digital Readout Selection	●	●
Selectable Display Colours	●	●
View Pre-Set Keys	●	●
Temperature Graph	●	●
Temperature Alarm	●	●
TrueArch [®] Technology	●	●
Freeze Frame	●	●
Instant Image Update	●	●
Mark Structure on Sonar	●	●
Selective Fish ID+	●	●
Real Time Sonar	●	●
Sonar Echo Enhancement	●	●
Triplog	●	●
X-Press [™] Menu System	●	●



800 Series

Model	898cx SI Combo
Display Size	7" diagonal
Display Pixel Matrix	480V x 800H
Display Type	Colour TFT
Display Colours/Greyscale	65,000 colours
Sonar - Standard	HD Side Imaging [®] , Down Imaging [™] and Dual beam PLUS [™]
Sonar Coverage	20', 60' & 180' @ -10db
Sonar Frequency	200/83/455/800 kHz
Sonar Optional	QuadraBeam PLUS [™]
Target Separation	65mm
Power Output (max.)	1000 Watts (RMS)* 8000 watts* (peak to peak)
Depth Capability	45m SI, 457m & 900m*
Temperature	Included
Speed	GPS speed included
Backlight	Yes
Waterproof	Yes
Unit Size - Gimbal Mount	286W x 171H x 108D mm
Unit Size - In-Dash Mount	286W x 152H x 63.5D mm
Mount	Gimbal or In-dash
Transducer - Standard	103260
Transducer Mounting - Standard	Transom
Power Input	10-20VDC

GPS Features

GPS Receiver	●
GPS Trackplotting	●
GPS Chartplotting	●
Waypoints, Routes, Tracks/Points	3,000, 50, 50/20,000
Humminbird UniMap	●
Navionics Gold	○
Navionics Platinum	○

Optional Add-Ons

GPS Receiver	●
WeatherSense	○
Wireless Sonar Link	—
CannonLink	○
InterLink	○
HumminbirdPC	○
Upgradeable Internal Software	○
Ethernet Networking	○

User Features:

Screen Snap Shot to Memory Card	●
Sonar Recording	●
Split Screen Zoom	●
Split Screen Bottom Lock	●
3D Chart View	●
Large Digits View	●
Wide/Narrow Cone Split Screen	●
Custom Digital Readout Selection	●
Selectable Display Colours	●
View Pre-Set Keys	●
Temperature Graph	●
Temperature Alarm	●
TrueArch [®] Technology	●
Freeze Frame	●
Instant Image Update	●
Mark Structure on Sonar	●
Selective Fish ID+	●
Real Time Sonar	●
Sonar Echo Enhancement	●
Triplog	●
X-Press [™] Menu System	●

● Included ○ Optional * Optional 1KW transducers available for max power output and deepwater use.



700 Series

	798cxi HD SI Combo	788cxi HD DI	788cxi HD Combo	778cx HD	728x	718x
Model	798cxi HD SI Combo	788cxi HD DI	788cxi HD Combo	778cx HD	728x	718x
Display Size	5" diagonal	5" diagonal	5" diagonal	5" diagonal	5" diagonal	5" diagonal
Display Pixel Matrix	640V x 640H	640V x 640H	640V x 640H	640V x 640H	640V x 320H	320V x 320H
Display Type	Colour TFT	Colour TFT	Colour TFT	Colour TFT	FSTN LCD	FSTN LCD
Display Colours/Greyscale	256 colours	256 colours	256 colours	256 colours	16 level greyscale	16 level greyscale
Sonar - Standard	Side Imaging [®] , Down Imaging [™] and DualBeam PLUS [™]	DualBeam PLUS [™] and Down Imaging [™]	DualBeam PLUS [™]	DualBeam PLUS [™]	DualBeam PLUS [™]	DualBeam PLUS [™]
Sonar Coverage	20°, 60° & 180° @ -10db	25°, 16°, 75° & 45° @ -10db	20° & 60° @ -10db	20° & 60° @ -10db	20° & 60° @ -10db	20° & 60° @ -10db
Sonar Frequency	200/83/455 kHz	200/455/800 kHz	200/83 kHz	200/83 kHz	200/83 kHz	200/83 kHz
Sonar Optional	QuadraBeam PLUS [™]	QuadraBeam PLUS [™]	QuadraBeam PLUS [™]	QuadraBeam PLUS [™]	QuadraBeam PLUS [™]	QuadraBeam PLUS [™]
Target Separation	65mm	65mm	65mm	65mm	65mm	65mm
Power Output (max.)	500 watts (RMS) 4000 watts (peak to peak)	500 watts (RMS) 4000 watts (peak to peak)	500 watts (RMS) 4000 watts (peak to peak)	500 watts (RMS) 4000 watts (peak to peak)	500 watts (RMS) 4000 watts (peak to peak)	300 watts (RMS) 2400 watts (peak to peak)
Depth Capability	45m SI, 457m	75 m DI, 305m	457m	457m	457m	305m
Temperature	Included	Included	Included	Included	Included	Included
Speed	GPS speed included	GPS speed included	GPS speed included	Capable	Capable	Capable
Backlight	Yes	Yes	Yes	Yes	Yes	Yes
Waterproof	Yes	Yes	Yes	Yes	Yes	Yes
Unit Size - Gimbal Mount	175W x 190H x 116D mm	175W x 190H x 116D mm	175W x 190H x 116D mm	175W x 190H x 116D mm	175W x 190H x 116D mm	175W x 190H x 116D mm
Unit Size - In-Dash Mount	175W x 137H x 32D mm	175W x 137H x 32D mm	175W x 137H x 32D mm	175W x 137H x 32D mm	175W x 137H x 32D mm	175W x 137H x 32D mm
Mount	Quick disconnect, optional in-dash	Quick disconnect, optional in-dash	Quick disconnect, optional in-dash	Quick disconnect, optional in-dash	Quick disconnect, optional in-dash	Quick disconnect, optional in-dash
Transducer - Standard	103262	103306	103303	103303	103303	103303
Transducer Mounting - Standard	Transom	Transom	Transom	Transom	Transom	Transom
Power Input	10-20VDC	10-20VDC	10-20VDC	10-20VDC	10-20VDC	10-20VDC
GPS Features						
GPS Receiver	●	●	●	○	○	○
GPS Trackplotting	●	●	●	○	○	○
GPS Chartplotting	●	●	●	—	—	—
Waypoints, Routes, Tracks/Points	3,000, 50, 50/20,000	3,000, 50, 50/20,000	3,000, 50, 50/20,000	750, 0, 10/2, 000	750, 0, 10/2, 000	750, 0, 10/2, 000
Humminbird UniMap	●	●	●	—	—	—
Navionics Gold	○	○	○	—	—	—
Optional Add-Ons						
GPS Receiver	●	●	●	○	○	○
WeatherSense	○	○	○	○	○	○
Wireless Sonar Link	○	○	○	○	○	○
CannonLink	○	○	○	○	○	○
InterLink	○	○	○	○	○	○
HumminbirdPC	○	○	○	○	○	○
Upgradeable Internal Software	○	○	○	○	○	○
Ethernet Networking	○	○	○	○	—	—
User Features:						
Screen Snap Shot to Memory Card	●	●	●	—	—	—
Sonar Recording	●	●	●	—	—	—
Split Screen Zoom	●	●	●	●	●	●
Split Screen Bottom Lock	●	●	●	●	●	●
3D Chart View	●	●	●	—	—	—
Large Digits View	●	●	●	●	●	●
Wide/Narrow Cone	●	●	●	●	●	●
Split Screen	●	●	●	●	●	●
Custom View Selections	●	●	●	●	●	●
Custom Digital Readout Selection	●	●	●	●	●	●
Selectable Display Colours	●	●	●	—	—	—
View Pre-Set Keys	●	●	●	●	●	●
Temperature Graph	—	—	—	—	—	—
Temperature Alarm	●	●	●	●	●	●
TrueArch [®] Technology	●	●	●	●	●	●
Freeze Frame	●	●	●	●	●	●
Instant Image Update	●	●	●	●	●	●
Mark Structure on Sonar	●	●	●	○	○	○
Selective Fish ID+	●	●	●	●	●	●
Real Time Sonar	●	●	●	●	●	●
Sonar Echo Enhancement	●	●	●	●	●	●
Triplog	●	●	●	○	○	○
X-Press [™] Menu System	●	●	●	●	●	●

Specifications



500 Series	597cxi HD DI Combo	597cxi HD Combo	596cx HD DI	596cx HD	587 cxi HD Combo	586cx HD	570x DI
Model	597cxi HD DI Combo	597cxi HD Combo	596cx HD DI	596cx HD	587 cxi HD Combo	586cx HD	570x DI
Display Size	5" diagonal	5" diagonal	5" diagonal	5" diagonal	4.5" diagonal	4.5" diagonal	5" diagonal
Display Pixel Matrix	640V x 640H	640V x 640H	640V x 640H	640V x 640H	640V x 480H	640V x 480H	640V x 320H
Display Type	Colour TFT	Colour TFT	Colour TFT	Colour TFT	Colour TFT	Colour TFT	FSTN LCD
Display Colours/ Greyscale	256 colours	256 colours	256 colours	256 colours	256 colours	256 colours	16 level greyscale
Sonar - Standard	Down Imaging™ and DualBeam PLUS™	DualBeam Plus™	Down Imaging™ and DualBeam PLUS™	DualBeam PLUS™	DualBeam PLUS™	DualBeam PLUS™	Down Imaging™ DualBeam PLUS™
Sonar Coverage	25°, 16°, 75° & 45° @ -10db	20° & 60° @ -10db	25°, 16°, 75° & 45° @ -10db	20° & 60° @ -10db	20° & 60° @ -10db	20° & 60° @ -10db	25°, 16°, 75° & 45° @ -10db
Sonar Frequency	200/455/800 kHz	200/83 kHz	200/455 & 800kHz	200/83 kHz	200/83 kHz	200/83kHz	200/455/800kHz
Sonar Optional	—	—	—	—	—	—	—
Target Separation	85mm	65mm	65mm	65mm	65mm	65mm	65mm
Power Output (max.)	300 watts (RMS) 2400 watts (peak to peak)	500 watts (RMS) 4000 watts (peak to peak)	300 watts (RMS) 2400 watts (peak to peak)	500 watts (RMS) 4000 watts (peak to peak)	300 watts (RMS) 2400 watts (peak to peak)	300 watts (RMS) 2400 watts (peak to peak)	300 watts (RMS) 2400 watts (peak to peak)
Depth Capability	DI 75m, SB 305m	457m	DI 75m, SB 305m	457m	244m	305m	75m DI, SB 305m
Temperature	Included	Included	Included	Included	Included	Included	Included
Speed	GPS speed included	GPS speed included	GPS speed capable	Capable	GPS speed included	Capable	Capable
Backlight	Yes	Yes	Yes	Yes	Yes	Yes	Yes
Waterproof	Yes	Yes	Yes	Yes	Yes	Yes	Yes
Unit Size - Gimbals Mount	175W x 190.5H x 114D mm	175W x 190.5H x 114D mm	175W x 190.5H x 114D mm	175W x 190.5H x 114D mm	175H x 190.5W x 114D mm	175H x 190.5W x 114D mm	175H x 190.5W x 114D mm
Unit Size - In-Dash Mount	175W x 137H x 32D mm	175W x 137H x 32D mm	175W x 137H x 32D mm	175W x 137H x 32D mm	175H x 137W x 32D mm	175H x 137W x 32D mm	175H x 137W x 32D mm
Mount	Quick disconnect, optional in-dash	Quick disconnect, optional in-dash	Quick disconnect, optional in-dash	Quick disconnect, optional in-dash	Quick disconnect, optional in-dash	Quick disconnect, optional in-dash	Quick disconnect, optional in-dash
Transducer - Standard	103306	103303	103306	103303	103303	103303	103306
Transducer Mounting - Standard	Transom	Transom	Transom	Transom	Transom	Transom	Transom
Power Input	10-20VDC	10-20VDC	10-20VDC	10-20VDC	10-20VDC	10-20VDC	10-20VDC
GPS Features							
GPS Receiver	●	—	●	—	●	—	—
GPS Trackplotting	●	—	●	—	●	—	—
GPS Chartplotting	●	—	●	—	●	—	—
Waypoints, Routes, Tracks/Points	3,000, 50, 50/20,000	3,000, 50, 50/20,000	3,000, 50, 50/20,000	—	3,000, 50, 50/20,000	—	—
Humminbird UniMap	●	—	●	—	●	—	—
Navionics Gold	○	—	○	—	○	—	—
Optional Add-Ons							
GPS Receiver	●	—	●	—	—	—	—
WeatherSense	—	—	—	—	—	—	—
Wireless Sonar Link	—	—	—	—	—	—	—
CannonLink	—	—	—	—	—	—	—
InterLink	—	—	—	—	—	—	—
HumminbirdPC	○	○	○	○	○	○	○
Upgradeable Internal Software	○	○	○	○	○	○	○
User Features:							
Screen Snap Shot to Memory Card	●	●	—	—	●	—	—
Sonar Recording	●	●	—	—	●	—	—
Split Screen Zoom	●	●	●	●	●	●	●
Split Screen Bottom Lock	●	●	●	●	●	●	—
3D Chart View	●	●	—	—	—	—	—
Large Digits View	●	●	●	●	●	●	●
Wide/Narrow Cone	●	●	●	●	●	●	●
Split Screen	●	●	●	●	●	●	●
Custom View Selections	●	●	●	●	●	●	●
Custom Digital Readout Selection	●	●	●	●	●	●	●
Selectable Display Colours	●	●	●	●	●	●	—
View Pre-Set Keys	—	—	—	—	—	—	—
Temperature Graph	—	—	—	—	—	—	—
Temperature Alarm	—	—	—	—	—	—	—
TrueArch® Technology	●	●	●	●	●	●	●
Freeze Frame	●	●	—	●	●	●	●
Instant Image Update	●	●	●	●	●	●	●
Mark Structure on Sonar	●	●	—	—	●	—	—
Selective Fish ID+	●	●	●	●	●	●	●
Real Time Sonar	●	●	●	●	●	●	●
Sonar Echo Enhancement	●	●	●	●	●	●	●
Triplog	●	●	○	○	●	○	○
X-Press™ Menu System	●	●	●	●	●	●	●

● Included ○ Optional * Optional 1KW transducers available for max power output and deepwater use.

Specifications



PiranhaMAX					
Model	PiranhaMAX 190cx	PiranhaMAX 180x	PiranhaMAX 170x	PiranhaMAX 160x	PiranhaMAX 150x
Model Options	—	—	—	160x Portable	150x Portable
Display Size	3.5" Diagonal	4" Diagonal	4" Diagonal	4" Diagonal	4" Diagonal
Display Pixel Matrix	320V x 240H	240V x 160H	240V x 160H	160V x 128H	160V x 128H
Display Type	Colour TFT	FSTN LCD	FSTN LCD	FSTN LCD	FSTN LCD
Display Colours/Greyscale	256 Colours	8 Level Greyscale	8 Level Greyscale	4 Level Greyscale	4 Level Greyscale
Sonar - Standard	Single Beam	TriBeam	Dual Beam	Dual Beam	Single Beam
Sonar Coverage	20° @ -10db	20° & 35° (2) @ -10db 90° Total Coverage	20° & 60° @ -10db	20° & 60° @ -10db	20° @ -10db
Sonar Frequency	200 kHz	200/455 kHz	200/83 kHz	200/83 kHz	200 kHz
Sonar Optional	—	—	—	—	—
Target Separation	65mm	65mm	65mm	65mm	65mm
Power Output (max.)	200 Watts (RMS)	200 Watts (RMS)	200 Watts (RMS)	100 Watts (RMS)	100 Watts (RMS)
	1600 Watts (Peak to Peak)	1600 Watts (Peak to Peak)	1600 Watts (Peak to Peak)	800 Watts (Peak to Peak)	800 Watts (Peak to Peak)
Depth Capability	244 m	244m	244m	180m	180m
Temperature	Included	Included	Included	Included	Included
Backlight	Yes	Yes	Yes	Yes	Yes
Waterproof	Yes	Yes	Yes	Yes	Yes
Unit Case Size	122mm W x 157mm H x84mm D	122mm W x 157mm H x84mm D	122mm W x 157mm H x84mm D	122mm W x 157mm H x84mm D	122mm W x 157mm H x84mm D
Mount	Tilt and Swivel	Tilt and Swivel	Tilt and Swivel	Tilt	Tilt
Transducer - Standard	103303	103303	103303	103303	103303
Transducer Mounting - Standard	Inside Hull or Transom	Inside Hull or Transom	Inside Hull or Transom	Inside Hull or Transom	Inside Hull or Transom
Power Input	10-20VDC	10-20VDC	10-20VDC	10-20VDC	10-20VDC

Features and specifications subject to change without notice



Fishin' Buddy			
Model	140cx Fishing' Buddy	120x Fishin' Buddy	110x Fishin' Buddy
Display Size	3.5" diagonal	4" diagonal	4" diagonal
Display Pixel Matrix	320V x 240H	240V x 160H	160V x 128H
Display Type	Colour TFT	TFT LCD	TFT LCD
Display Colours/Greyscale	256 colours	8 level greyscale	4 level greyscale
Sonar	Down/Side	Down/Side	Single Beam Down
Sonar Coverage	34° & 10° @ -10db	34° & 10° @ -10db	34° @ -10db
Sonar Frequency	200/455 kHz	200/455 kHz	200 kHz
Sonar Optional	—	—	—
Target Separation	65mm	65mm	65mm
Power Input	125 watts (RMS)	125 watts (RMS)	125 watts (RMS)
	1000 watts (peak-to-peak)	1000 watts (peak-to-peak)	1000 watts (peak-to-peak)
Depth Capacity	72m Down & 36m Side	72m Down & 36m Side	72m Down
Temperature	Included	Included	Included
Backlight	Yes	Yes	Yes
Waterproof	Yes	Yes	Yes
Unit Case Size	122W x 157H x 84D mm	122W x 157H x 84D mm	122W x 157H x 84D mm
Mount	Portable clamp	Portable clamp	Portable clamp
Transducer - Standard	—	—	—
Transducer Mounting - Standard	610 - 1016mm telescopic pole	610mm fixed pole	610mm fixed pole
Power Input	6 x AA	6 x AA	6 x AA

Features and specifications subject to change without notice



Sensing Technology

High Performance Deep Water Transducers

TM258 – 1 kW Transom-Mount Transducer

The industry's first 1 kW transom-mount transducer has a new high-performance mounting bracket. The sleek, new bracket makes the TM258 easier to install. Additionally, its streamlined shape will give you improved high-speed performance up to 30 knots (35 MPH). The TM258 will suit 800, 900 or 1100 Series. Get 16 times the sensitivity compared with a standard transom-mounted transducer. The TM258 packs four 50 kHz/200 kHz elements to focus narrow beams at both frequencies, so you'll see crisp targets and clear bottom definition.

Fishing Applications

- Inshore and blue-water trolling
- Deep-water bottom and structure fishing up to 647 m (2135ft)
- The versatile 1 kW transducer for all types of fishing

Features

- Depth and new fast-response water-temperature sensor
- Elliptical beam covers larger bottom area
- Fits existing TM256 and TM258 models
- Bracket kick-up assembly locks in the "up" position and will not damage the transom

M260 – In-Hull 1 kWHD Digital Transducer

Excellent performance can be achieved from an in-hull mounted transducer. The M260, Airmar's 1 kW in-hull, is designed with Airmar's exclusive Broadband Ceramic Technology. Because the M260 has narrow beams at both frequencies, separation of individual targets and the ability to distinguish between fish and the bottom makes finding fish easy. Optimal fishfinder performance no longer requires drilling a hole in the hull! The M260 is able to transmit and receive through solid fiberglass, displaying sharp detailed images. Track the bottom at speeds exceeding 30 knots (34 MPH)! Installation simply requires adhering the tank to the inside of the vessel, leaving a clean and smooth hull exterior.

Fishing Applications

- Blue-water trolling using 50 kHz
- Deep-water bottom and wreck fishing up to 800 m (2,625')

Features

- Top-of-the-line broadband, in-hull transducer
- Recommended for solid fiberglass hulls
- Depth only
- Innovative tank design allows for bow-stern or port-starboard mounting
- Non-toxic anti-freeze (propylene glycol) is used to fill the tank
- Fiberglass resin is used to adhere tank to the hull
- Interfaces to any 800, 900 and 1100 Series units
- Boat Size: 8 m (25') and up



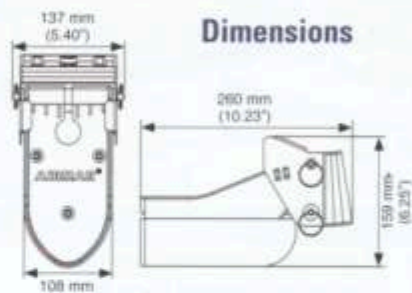
BLA Code 103305

50/200 kHz-BIq

Number of Elements and Configuration		
Beam Width (@-3 dB)	15° x 21°	3° x 5°

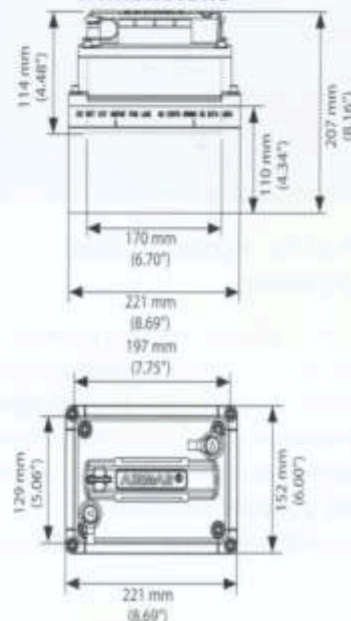
Maximum Depth Range

50 kHz	200 kHz
441 m to 647 m (1,500' to 2,200')	206 m to 294 m (700' to 1,000')



BLA Code 103309

Dimensions



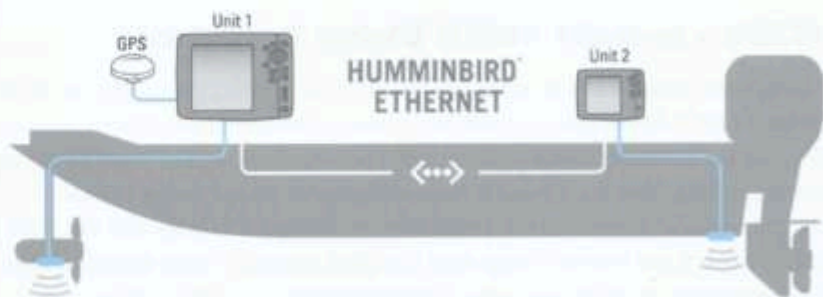


New High-Speed Ethernet



ETHERNET CABLES

BLA Code	Description
103900	Humminbird Ethernet Cable 0.6M
103902	Humminbird Ethernet Cable 3M
103903	Humminbird Ethernet Cable 6M
103904	Humminbird Ethernet Cable 9M
103906	Humminbird Adapter Cable T/S 700HD



Networkable upgradable fishing system

Share sonar, GPS, waypoints, and more between compatible units.* With no complicated connections or expensive wiring, finding fish has never been easier or faster. Ethernet networking instantly puts critical information at your command, anywhere on the boat. Compatible with new Humminbird® 700 HD, 800, 900, and 1100 Series™ models, plus Ethernet-equipped legacy models. Completely upgradable and expandable, giving you advanced

capabilities from bow to stern. You get the capability and convenience of sharing GPS positions, waypoints and routes, barometric pressure information and even downrigger control. Choose the network capabilities you want from our many options, and easily connect them Humminbird's exclusive no-hassle Plug and Play technology. With no expensive wiring built into your boat, or complicated connections.

*Interlink™ Network Connections required to create networking using non-Ethernet-capable Humminbird® models. Sonar not supported.

NEW 1100 Series™


10.4"
600Vx800H



➤ **1198cx SI Combo**
BLA Code 104332



➤ **1158cx Combo**
BLA Code 104322

NEW 700 Series™

HD
5"
640Vx640H



➤ **798cxi HD SI Combo**
BLA Code 104138



➤ **788cxi HD DI Combo**
BLA Code 104134



➤ **788cxi HD Combo**
BLA Code 104131



➤ **778cx HD**
BLA Code 104109

NEW 500 Series™

up to

HD
5"
640Vx640H



➤ **597cxi HD DI Combo**
BLA Code 102454



➤ **597cxi HD Combo**
BLA Code 102452



➤ **596cx HD DI**
BLA Code 102448



➤ **596cx HD**
BLA Code 102446



➤ **587cxi HD Combo**
BLA Code 102442



➤ **586cx HD**
BLA Code 102438



➤ **570x DI**
BLA Code 102434



➤ **560x**
BLA Code 102430



LEE RAYNER

TV Presenter

"After years of fishing the in and offshore waters and using many different brands of sounders and GPS I can say with complete confidence that I have never been happier than with my Humminbird gear."



SHAUN CLANCY

Tournament Angler & Reigning ABT Bream Champion

"Since they began in the early '70's, Humminbird Sounders and GPS Units have always been the market leaders for innovation and ease of use."



TIM MORGAN

AFC Angler & Tournament Winner

"Your sounder and GPS is the most important piece of fishing equipment on your boat. I believe that Humminbird units are the most reliable and easy to use sounders available on the market today."



CARL JOCUMSEN

AFC Angler & Tournament Winner

"I use Humminbird because I believe that it is the best brand on the market; they are extremely easy to use and they have never let me down. Humminbird technology always seems to be one step ahead of the rest."



ANDREW "ET" ETTINGSHAUSEN

Escape with ET TV Presenter

"I'm passionate about fishing and enjoy every opportunity to land the big ones using the latest Humminbird technology. I also believe in actively promoting environmental responsibility and sustainable fishing methods."



WAYNE FRIEBE

Tournament Angler & Fishing Writer

"Humminbird sounders are clear, accurate and very easy to use. Their sounders give me the most concise indications of bottom structure and density, which is crucial in shallow water sports fishing."



CHRIS WRIGHT

Abalone Diver/Tournament Angler

"Humminbird sounders and GPS provide me with the tools I need to locate fish. The back up and support through BLA is second to none."



NIGEL WEBSTER

Fishing Writer & Tournament Angler

"Humminbird improve their product every year. The quality of the detail I now can see below (and to the sides) of my boat is mind blowing. I no longer question where the fish are, just how to catch them."



RODERICK WALMSLEY

Fishing Writer, Charter Boat Skipper and Tournament Angler

"I have used Humminbird units for the last 20 years in a competitive fishing environment; watching them continually strive to improve their product and stay ahead of their competition. They will always be my first choice and I still regard Humminbird as the best in the business."

Supporting fishing into the future

Media Promotion

Humminbird is committed to promoting fishing to an ever wider audience and have teamed up with some of Australia's top TV adventure, fishing and outdoor shows.



Escape with ET TV series

Channel One HD's Escape with ET's weekly episodes tap into some high-octane action, fun, fishing and boating for the whole family.

Visit <http://escapewithet.com>

ADVENTURE BOUND

Adventure Bound TV series

Adventure Bound is now showing on TVS Sydney & Channel 31 Melbourne, Brisbane & Adelaide. Featuring fishing action with host Lee Rayner. Visit www.adventurebound.com.au



Mark Berg's Fishing Addiction TV show

Featured on Lifestyle Channel, Mark Berg travels around the country and surprises people with a free fishing trip of a lifetime. Visit www.fishingaddiction.com.au

Competition Sponsorship

Humminbird are proud to support fishing competitions, both big and small throughout Australia. Here are just a few and include some of the most prestigious events in the fishing calendar.



NT Barramundi Classic

The "NT Barramundi Classic" is one of Australia's premier Barramundi fishing tournaments.

Visit www.darwingamefishingclub.com.au



Humminbird Bream Series

Held in some of the finest bream fishing locations in Victoria this series includes 5 rounds and a Grand final.

Visit www.vicbreamclassics.com.au



ABT

Australia's Premier Bream, Bass and Barra Tournaments held throughout Australia. Visit www.bream.com.au



Barra Nationals

The Barra Nationals is one of Australia's most renowned and largest Barramundi Fishing Competitions.

Visit www.palmerstongamefishing.com.au

NEW Websites

www.humminbird.com.au

www.humminbird.co.nz

Visit www.humminbird.com.au



HUMMINBIRD

Simply. Clearly. Better.



Community area



360 Product view



Tim Morgan

Engage, Inspire and Connect

Join the Community for articles, expert advice and fishing tips from the Pro Team.

Interact in a New Dimension

View products from every angle using 360 product view.



Your nearest stockist



HUMMINBIRD

Simply. Clearly. Better.

humminbird.com.au

humminbird.co.nz

humminbird.asia

Disclaimer: Every reasonable effort has been made to ensure the accuracy of the information in this brochure at the time of printing. We cannot accept responsibility for errors or omissions. Features and specifications subject to change without notice. Lifestyle images on pages 12 & 13 are copyrighted to Bradley Simons.

BLA CODE 994490



12_11_Humminbird Bro 2011

04/2011

Distributed exclusively by
BLA Pty Ltd

BLA
boatinglifestyleadventure



P.O. Box 7171, Hemmant, Queensland, Australia 4174	Unit 2, 76 Porana Road, Glenfield, Auckland NZ 0627
P: 1300 252 725	P: (09) 442 1717
F: 1300 252 329	F: (09) 442 1718
W: bla.com.au	W: bla.co.nz